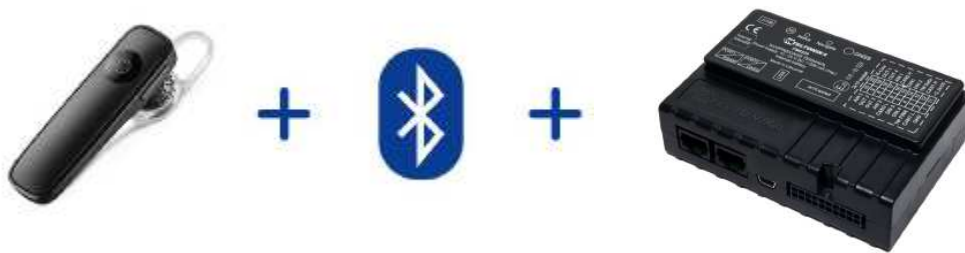


# How to connect Bluetooth Hands Free adapter to FMB630 device V1.1



\*This version is suitable for device with firmware version **00.02.44** and newer

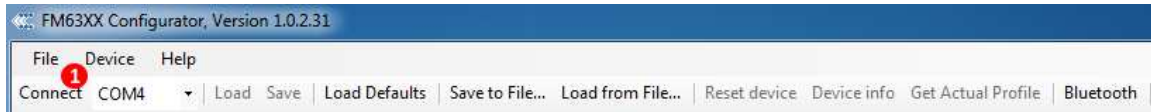
## Table of Contents

<b>1</b>	<b>Bluetooth settings configuration .....</b>	<b>2</b>
<b>2</b>	<b>Connecting Bluetooth Hands Free adapter .....</b>	<b>3</b>

# 1 Bluetooth settings configuration

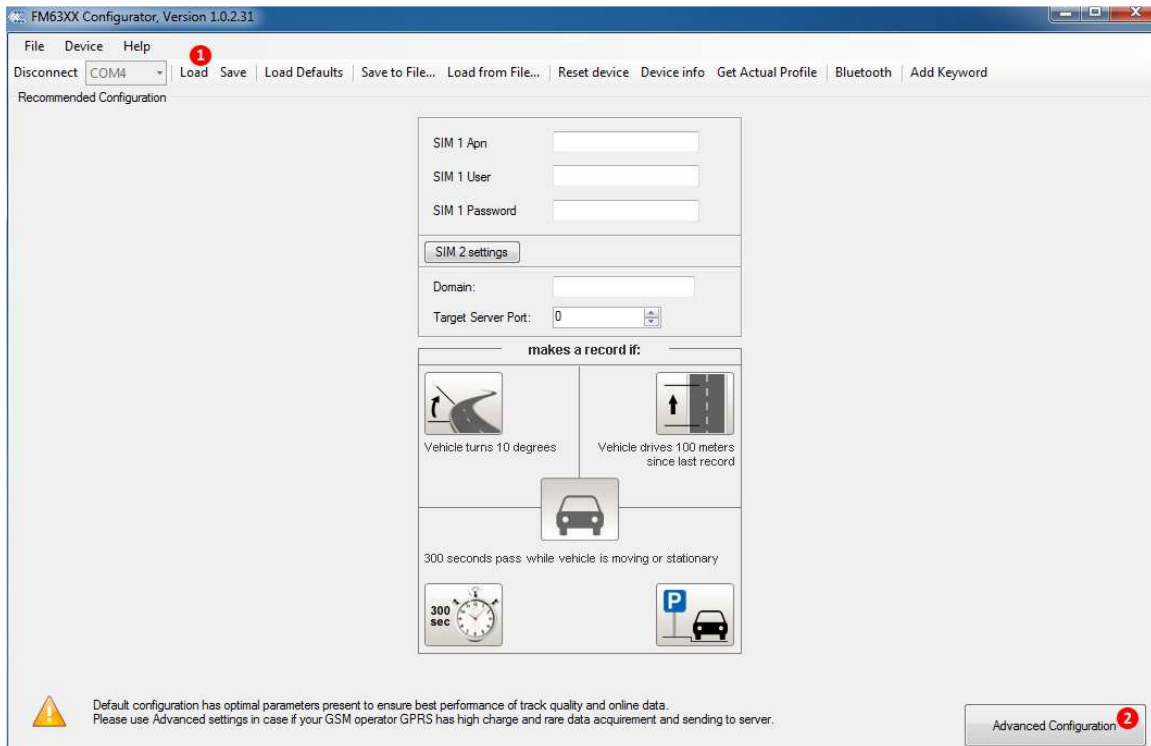
These are instructions how to easily prepare Bluetooth Hands Free device connection to FMB630 device. First we need to configure FMB device Bluetooth settings for proper connection to this hands-free unit. These are required steps:

1. Connect FMB device to PC using USB cable.
2. Launch **FM63XX Configurator** and connect to device as shown in **Figure 1** below.



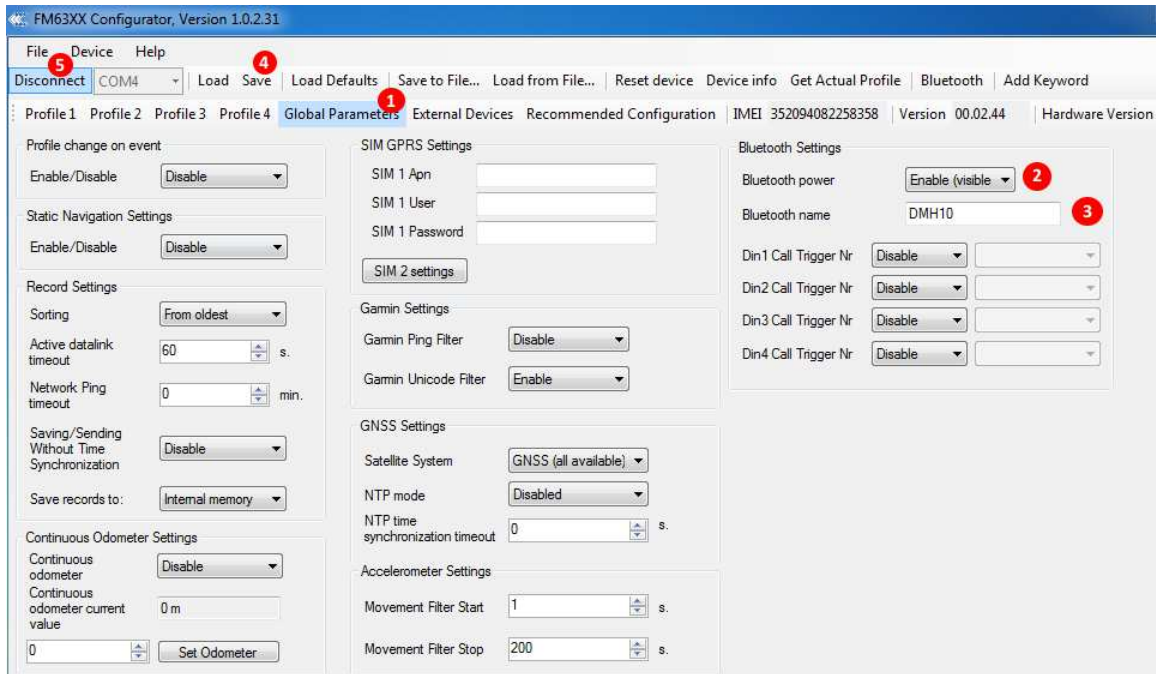
**Figure 1** FMB630 connecting to configurator

3. After successful connection to device press “**Load**” button to load device current configuration visible at **Figure 2.1**



**Figure 2.1** Load configuration from device; **2.2** Advanced configuration

4. When device configuration is loaded press „**Advanced configuration**“ button at **Figure 2.2**



**Figure 3.1** Global Parameters; **3.2** Enable Bluetooth; **3.3** External Bluetooth device name; **3.4** Save device configuration; **3.5** Disconnect device

5. Select “**Global Parameters**” settings tab at **Figure 3.1**
6. Turn on Bluetooth power „**Enable (visible)**“ (**Figure 3.2**).
7. Set “**Bluetooth name**” as your Hands Free device name (**Figure 3.3**). for proper device identification and connection to it. In this example Hands Free headset name is „DMH10“ but at least 2 characters are needed to recognize it and connect to it. For better and faster adapter identification in network you could enter a full device name. You could check your Hands Free adapter Bluetooth name by scanning nearby Bluetooth devices using mobile phone or computer with Bluetooth adapter.
8. After all these steps press „**Save**“ to save configuration (**Figure 3.4**).
9. Now you can disconnect FMB device from a configurator (**Figure 3.5**).

## 2 Connecting Bluetooth Hands Free adapter

After this configuration you could connect your Hands Free device to FMB device. Turn on Hands Free device then turn on its Bluetooth connection for pairing following your model instructions<sup>1</sup>. Hands Free adapter should make a special sound in ear from speaker or its led identification should change to inform about successful connection<sup>2</sup>. To check if adapter is successfully connected, call to FMB device, Hands Free device should start ringing. If you later restart FMB device it will automatically connect to this adapter.

<sup>1</sup> Hands Free device Bluetooth connection pairing instructions depends on specific model.

<sup>2</sup> Hands Free device notification about paired Bluetooth connection depends on specific model.