

AT2000

ASSET TRACKER

GNSS/GSM TERMINAL



Description

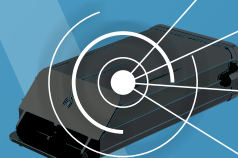
AT2000 is an asset tracking device with GPS/GLONASS, GSM connectivity and autonomous battery, which is able to collect device coordinates and transfer them via GSM (GPRS or SMS) network. The device is perfectly suitable for applications where location acquirement of autonomous remote objects is needed. Device modifications with or without external sensors are available (Magnets sensor, DIN, AIN, Dallas temperature sensor).

Main features

- Long autonomous lifetime
- SMS/GPRS communication
- Accelerometer
- Protection level IP65
- Integrated mounting magnets
- Rechargeable batteries
- Optional external power source connection (6V-30V)

Application

- Container tracking
- Rail carriage tracking
- Construction/agricultural appliances tracking
- Secret tracking
- Transit goods tracking



If You think, this is not enough to win ALL Your potential customers - please contact us to get advices how to use it in Your application!



Technical details

GSM

- Quad-band 900/1800 MHz; 850/1900 Mhz
- GPRS class 10 (up to 85,6 kbps)
- SMS (text/data)

GPS/GLONASS

- Sensitivity -161 dBm

Interface

- Micro USB
- 1-wire protocol support
- 2 configurable inputs (digital input, digital output, analog input)*

Size

- Device: (148 x 84 x 43) mm

Features

- GPS/GLONASS data collection
- Real time tracking
- Sending acquired data via GPRS (TCP/IP)
- Operating in roaming networks by preferred GSM providers list
- Accelerometer
- Small and easy to install case
- Profile change on event
- 20 geo-fence zones (rectangular or circle)
- Interactive geo-zones configuration
- Integrated scenarios:
 - Asset tracking scenario in the sea
 - Asset tracking scenario on land
 - Sea/Land scenario
 - Security scenario
- I/O elements:
 - Digital inputs (accessories: light sensors, alarm button, door sensor etc.)
 - Digital output (accessories: LED light, buzzer)
 - Analog input (for monitoring voltage: fuel sensors, generators etc.)
 - 1-wire protocol (Dallas temperature sensors)

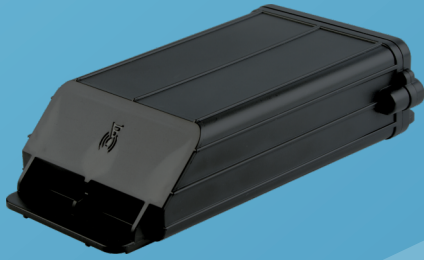
*- the interface depends on the chosen configuration

AT2000 LIFETIME

Acquisition frequency	Sending via GPRS	Lifetime with internal rechargeable batteries
24 hours	24 hours	17 weeks*
1 hour	24 hours	16 weeks*
2 hours	12 hours	15 weeks*
1 hour	4 hours	13 weeks*
20 minutes	1 hour	11 weeks*

*- Lifetime is declared approximately. It strongly depends on usage conditions and device configuration (GSM/GPRS coverage, GNSS visibility, I/O elements settings, temperature, batteries energy level). Lifetime can be extremely increased by using external power or additional external battery bank.

AT1200 and AT2000 comparison



	AT1200	AT2000
■ External Power source option	No	Yes*
■ Battery charging from external power source	No	Yes*
■ Digital inputs	No	Yes*
■ Analog inputs	No	Yes*
■ Digital outputs	No	Yes*
■ 1-wire	No	Yes*
■ Magnet sensor	Yes	Yes*
■ Magnet Pad	Yes	Yes*
■ Overvoltage protection for digital inputs	No	Yes*
■ Accelerometer	No	Yes
■ Encrypted communication protocol	No	Yes
■ Firmware update via FOTA	No	Yes
■ Configuration update via FOTA	No	Yes
■ Remote log	No	Yes
■ GPRS commands	No	Yes
■ Programmable geozones	10	20
■ Integrated usage scenarios	No	Yes
■ Universal configurator (Firmware update, debug log)	No	Yes

*- the interface depends on the chosen modification