

GL300 Manage Tool User Guide

GSM/GPRS/GPS Tracker

TRACGL300MT004

Revision: R1.04



International Telematics Solutions Innovator

www.queclink.com

Document Title	GL300 Manage Tool User Guide
Version	R1.04
Date	2017-03-11
Status	Release
Document Control ID	TRACGL300MT004

General Notes

Queclink offers this information as a service to its customers, to support application and engineering efforts that use the products designed by Queclink. The information provided is based upon requirements specifically provided to Queclink by the customers. Queclink has not undertaken any independent search for additional relevant information, including any information that may be in the customer's possession. Furthermore, system validation of this product designed by Queclink within a larger electronic system remains the responsibility of the customer or the customer's system integrator. All specifications supplied herein are subject to change.

Copyright

This document contains proprietary technical information which is the property of Queclink Wireless Solutions Co., Ltd, copying of this document and giving it to others and the using or communication of the contents thereof, are forbidden without express authority. Offenders are liable to the payment of damages. All rights reserved in the event of grant of a patent or the registration of a utility model or design. All specification supplied herein are subject to change without notice at any time.

Contents

Contents	2
0. Revision History	3
1. GL300 Manage Tool Interface	4
1.1. System Requirements	4
1.2. COM Setting	5
1.3. Quick Setting Wizard	5
1.4. Professional Setting Windows	6
1.4.1. Title Bar	6
1.4.2. Menus	6
1.4.3. Toolbar	9
1.4.4. Status Bar	9
1.4.5. Command Browser and Command Operation Space	10
1.5. Operation Result Interface	11
1.5.1. Operation Successfully Interface	11
1.5.2. Operation Failed Interface	12
2. Operation Instruction	14
2.1. Device Configuration with Quick Setting Wizard	14
2.1.1. Welcome to Quick Setting Wizard	14
2.1.2. GPRS Network Setting	14
2.1.3. Main Server Setting	15
2.1.4. Fixed Time Report Setting	16
2.1.5. Send Command to Device	17
2.2. Device Configuration in Professional Setting Mode	19
2.3. Read/Save All Configuration	20
2.4. Load/Send All Configuration	21

0.Revision History

Revision	Date	Author	Description of change
1.00	2015-08-19	Vega Yu	Initial
1.01	2015-10-29	Vega Yu	Update MT Version to 1.1
1.02	2016-01-09	Vega Yu	Update MT Version to 1.2
1.03	2016-05-06	Vega Yu	1. Add a new parameter of <Output Direction> in command AT+GTRTO . 2. Update MT Version to 1.3
1.04	2017-03-11	Abel xiang	Add the note of Read/SaveAll Configuration

1. GL300 Manage Tool Interface

GL300 manage tool is PC software which can be used to configure GL300 through UART. It is easy for the backend server developers to configure GL300 with manage tool, which has friendly user interface. The correct command messages sent to GL300 will be displayed on the manage tool. (These messages can also be sent by SMS or GPRS).

The administrators can also use the manage tool to configure GL300 before selling. But it is strongly recommended to establish a backend server and implement the way to control GL300 by SMS or GPRS. Please refer to “*GL300 @Track Air Interface Protocol*” for detail.

Before using the manage tools please install driver for the USB data cable (DATA CABLE_M). After that a new COM port can be found in the PC system, and then please follow the steps as below:

1. Connect GL300 to 12VDC power supply and GL300 will power on.
2. Connect GL300 to PC with USB data cable (DATA CABLE_M).
3. Run “**GL300 Manage Tool Vx.xx.exe**”.

1.1. System Requirements

In order for this manage tool to run on your computer, you must use it in below operating system:

- ◆ Windows XP SP2 and above (32 & 64 bit);
- ◆ Windows Server 2003 (32 & 64 bit);
- ◆ Windows Server 2008 (32 & 64 bit);
- ◆ Windows Vista (32 & 64 bit);
- ◆ Windows 7 (32 & 64 bit);
- ◆ Windows 8 (32 & 64 bit);

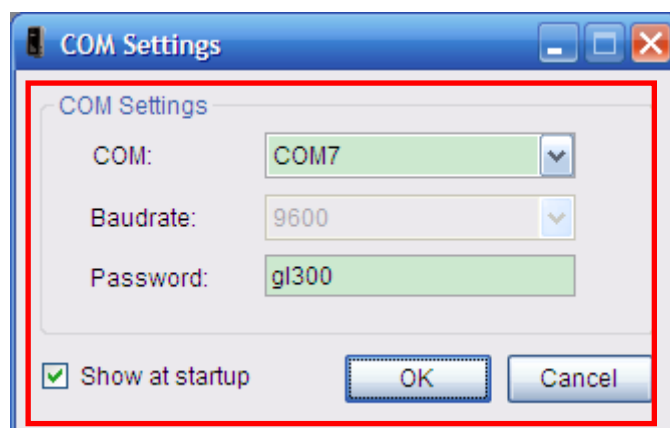
Supported System Environments:

- ◆ Microsoft .NET Framework 4.0 or higher

Microsoft .NET Framework 4.0 download link:

<http://www.microsoft.com/en-US/download/details.aspx?id=17718>

1.2.COM Setting



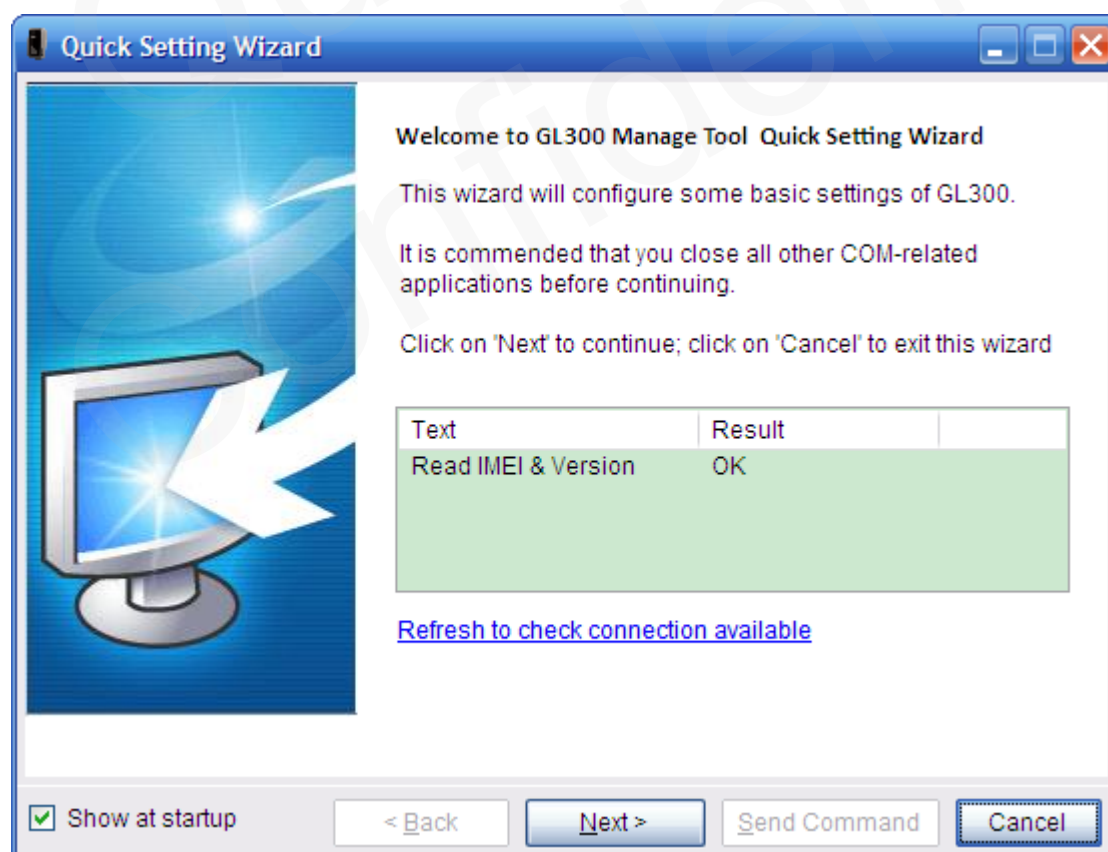
Select the COM port, baud rate (9600bps in default), input the password (“GL300” in default), and click “OK” button, then setting window will display.

1.3.Quick Setting Wizard

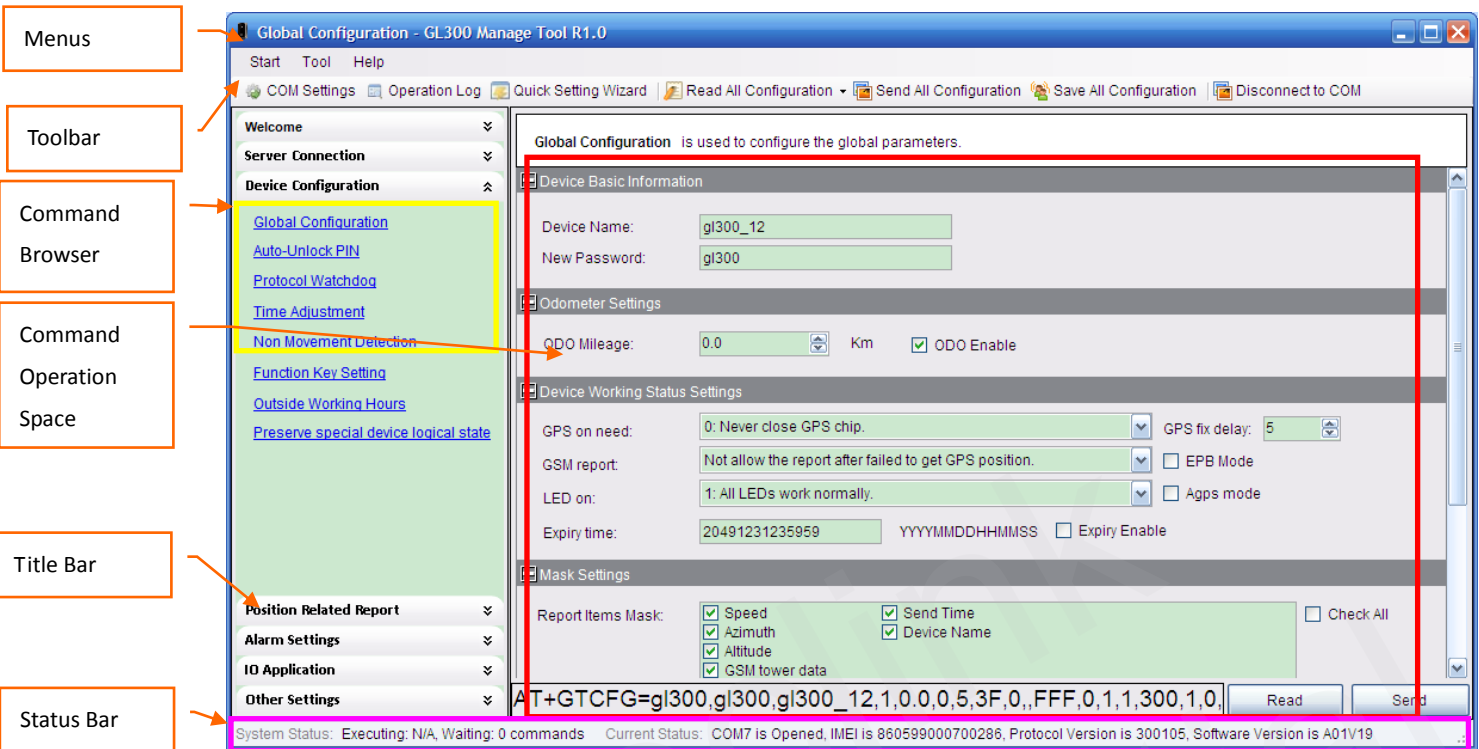
The quick setting wizard gives a basic setting for device. If you want use more functions of GL300, please change to enter professional setting mode.

Before you enter quick setting wizard, you must make sure the COM connection is OK.

Please refer chapter 3.1 for the detail of setting with quick setting wizard.



1.4. Professional Setting Windows



1.4.1. Title Bar

Title Bar indicates current operational command title and the name of manage tool.

1.4.2. Menu

It include “Start”, “Tool”, “Help” menu in menus.



1.4.2.1 Start Menu

Start menu include “COM Settings”.

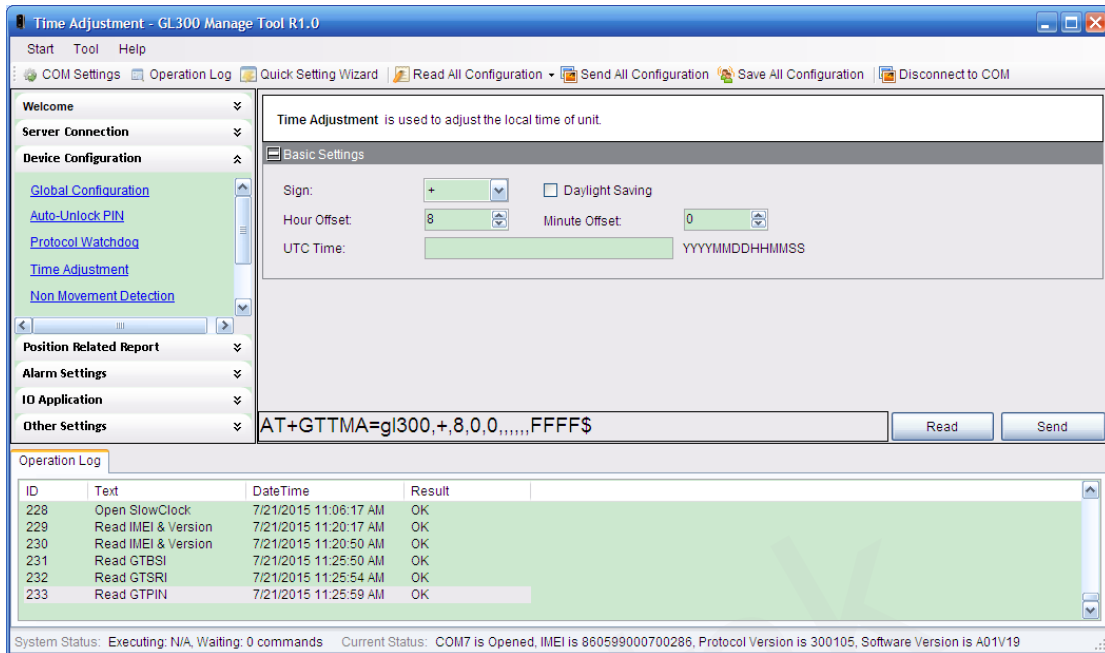
[COM Setting]: It is used to set the COM information and password Setting details please refer to chapter 2.2

1.4.2.2 Tool Menu

Tool menu include “Quick Setting Wizard”, “Operation Log”, “Options” setting.

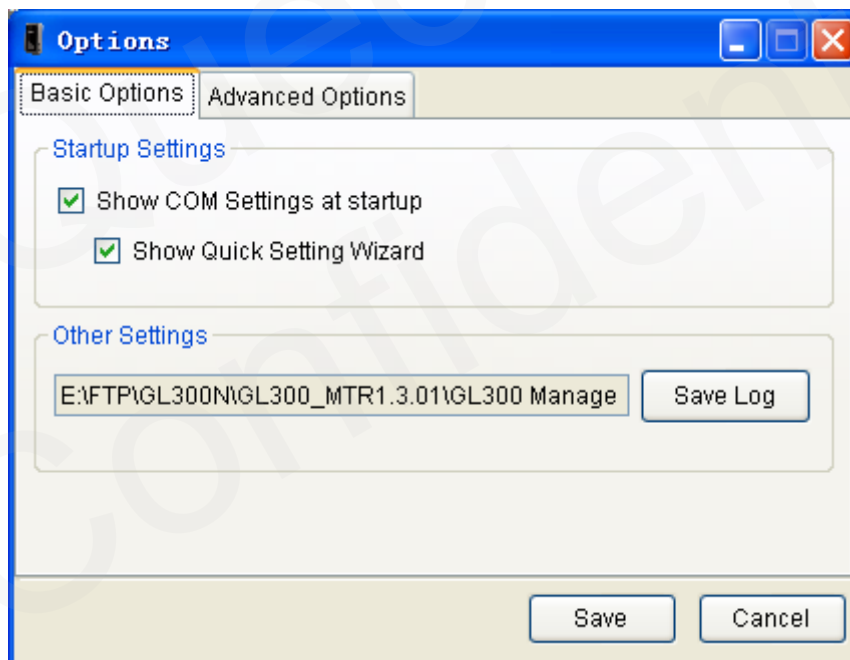
[Quick Setting Wizard]: It is used to open quick setting wizard directly. Please refer to chapter 3.1 for details.

[Operation Log]: It is used to display/hidden the operation log.



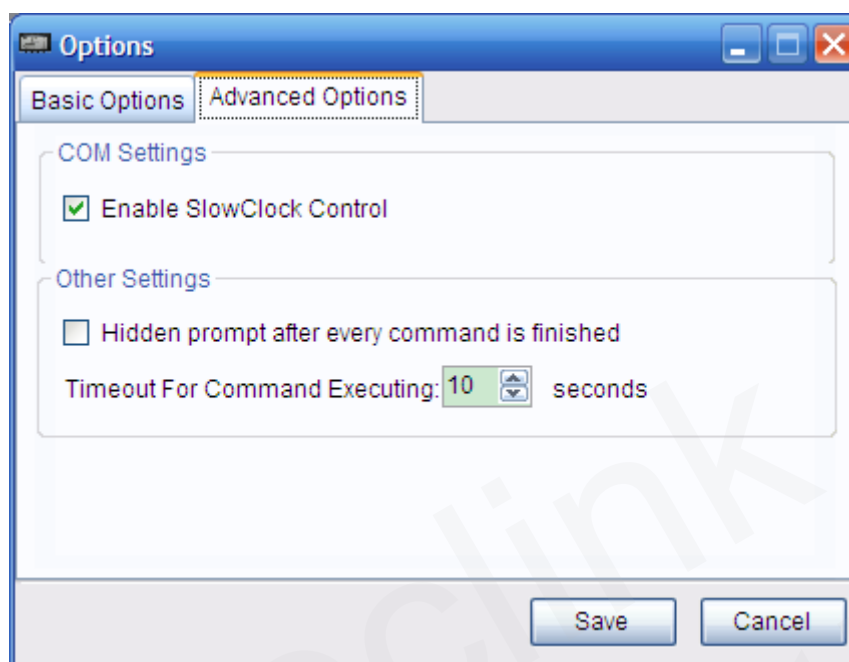
[Options]: It is used to set the basic setting of manage tool.

“Basic Options” include startup setting options and log save option.



“Advanced Options” include COM settings and other settings.

COM Settings is used to set COM setting. It is recommended using default setting for these settings.



1.4.2.3 Help Menu

[About]: Select “About”. Then the following pop up window will display.



“Manage Tool Version” indicates the version of this manage tool.

“Support Version” indicates the firmware which this manage tool used for.

“Device Version” indicates the firmware which connects to the PC. It is recommended using the same version of support version. If it is different between support version and device version, the new character of device can not be used in this tool.

1.4.3. Toolbar

It include “COM Setting”, “Operation Log”, “Quick Setting Wizard”, “Real All Configuration”, “Send All Configuration”, “Save All Configuration”, “Connect/Disconnect to COM”.



[COM Setting]: It is used to set the COM information and password. Setting details please refer to chapter 2.2.

[Operation Log]: It is used to display/hidden operation log.

[Quick Setting Wizard]: It is used to open quick setting wizard directly. Please refer to chapter 3.1 for details.

[Read All Configuration]: It is used to display/hidden read and load.



“*Read From Device*”: It is used to read all configuration(except command GTDAT) from device which connects to PC.

“*Load Configuration From File*”: It is used to load configuration file to the manage tool.

[Send All Configuration]: It is used to send all configurations(except command GTQSS, GTDAT, GTRTO) in Command Operation Space.

[Save All Configuration]: It is used to save all configurations in Command Operation Space to file.

[Connect/Disconnect to COM]: It is used to Connect/Disconnect to COM manually.

1.4.4. Status Bar



System Status: Executing: N/A, Waiting: 0 commands Current Status: COM16 is Opened, IMEI is 863286020048790, Protocol Version is 250404, Software Version is A05V17

There is system status and current status in status bar.

[System Status]: It indicates the count of commands which are waiting and executing to set.

[Current Status]: It indicates current COM status, IMEI, protocol version and software version which read from device.

1.4.5. Command Brower and Command Operation Space

This area is mainly read and set parameters of device.

1.4.5.1 Command Brower

Command Brower separates all @track protocol command to several parts. Click Function in command Brower, reference parameters of this command will be shown in command operation space.

Command Brower	Function Description	Relative Command
Server Connection	Bearer Setting Information	GTBSI
	Backend Server Register Information	GTSRI
	Quick Start Settings	GTQSS
Device Configuration	Global Configuration	GTCFG
	Non movement detection	GTNMD
	Time Adjustment	GTTMA
	Function Key Setting	GTFKS
	Auto-Unlock SIM PIN	GTPIN
	Protocol Watchdog	GTDOG
	Network Select	GTNTS
	Function Key Setting	GTFKS
	Outside Working Hours	GTOWH
	Jamming Detection	GTJDC
Position Related Report	Fixed Position Information	GTFRI
Alarm Setting	Geo-Fence Configuration	GTGEO
	Speed Alarm	GTSPD
	Temperature Alarm	GTTMP
IO Application	Digital Input Port Setting	GTDIS
Other Settings	Real Time Operation	GTRTO
	White Call List Configuration	GTWLT
	Google link SMS configuration	GTGLM
	Data transfer between UART and backend server	GTDAT
	Store Command String	GTCMD
	User Defined Function	GTUDF
	Update configuration over the air	GTUPC
	Preserve special device logical state	GTPDS
	Remote vibration motor control	GTRVC

1.4.5.2 Command Operation Space

[Command Description]: There is a short description for reference command.

[Parameters Area]: Set/Read parameters of this command in this area.

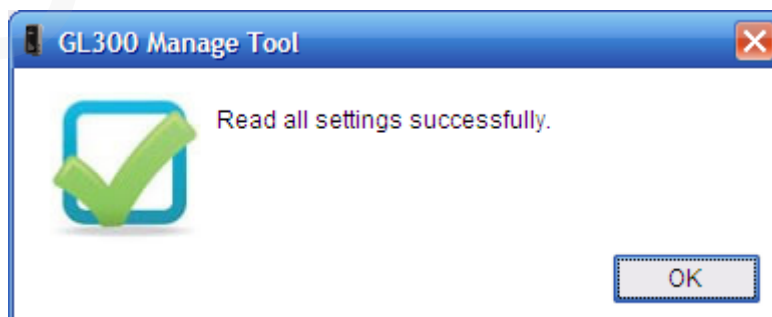
[Command Display]: Command with parameters in parameters area display in this area.

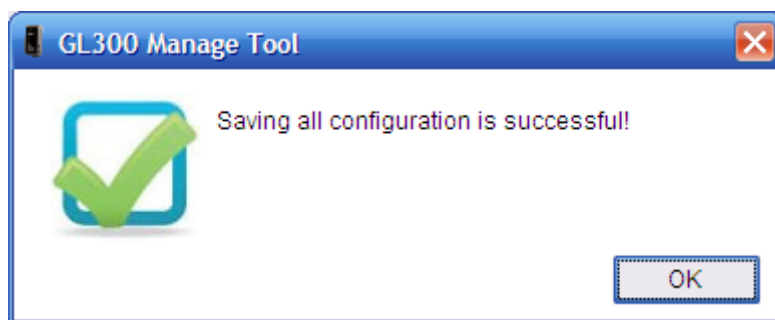
[Read]: Click this button to read this command from device.

[Send]: Click this button to send this command to device.

1.5.Operation Result Interface

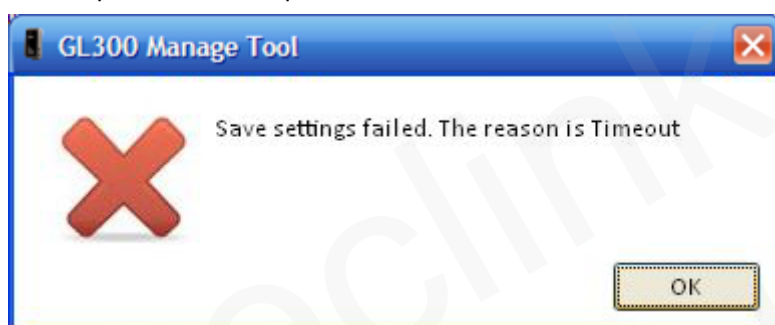
1.5.1.Operation Successfully Interface



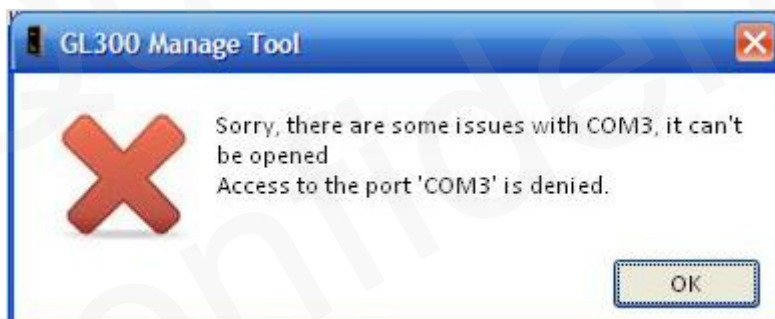


1.5.2.Operation Failed Interface

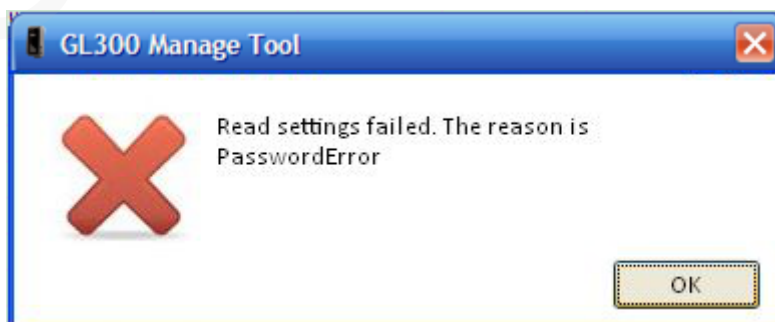
There should be COM port connection problem if the fail reason is timeout.



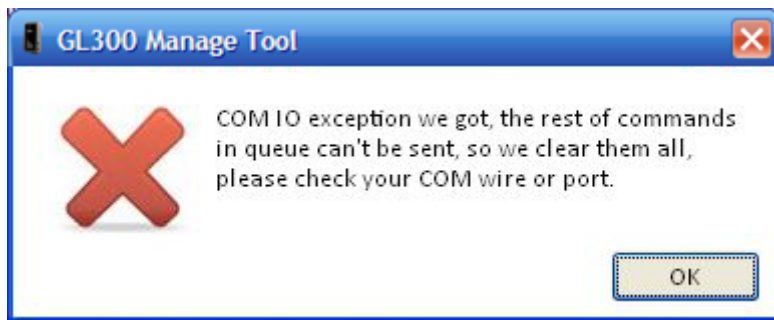
There should be COM port is occupied. Please close all other COM-related applications.



Please change to correct device password if Password Error.



There are some issues with this com, please check your com wire or port.



2.Operation Instruction

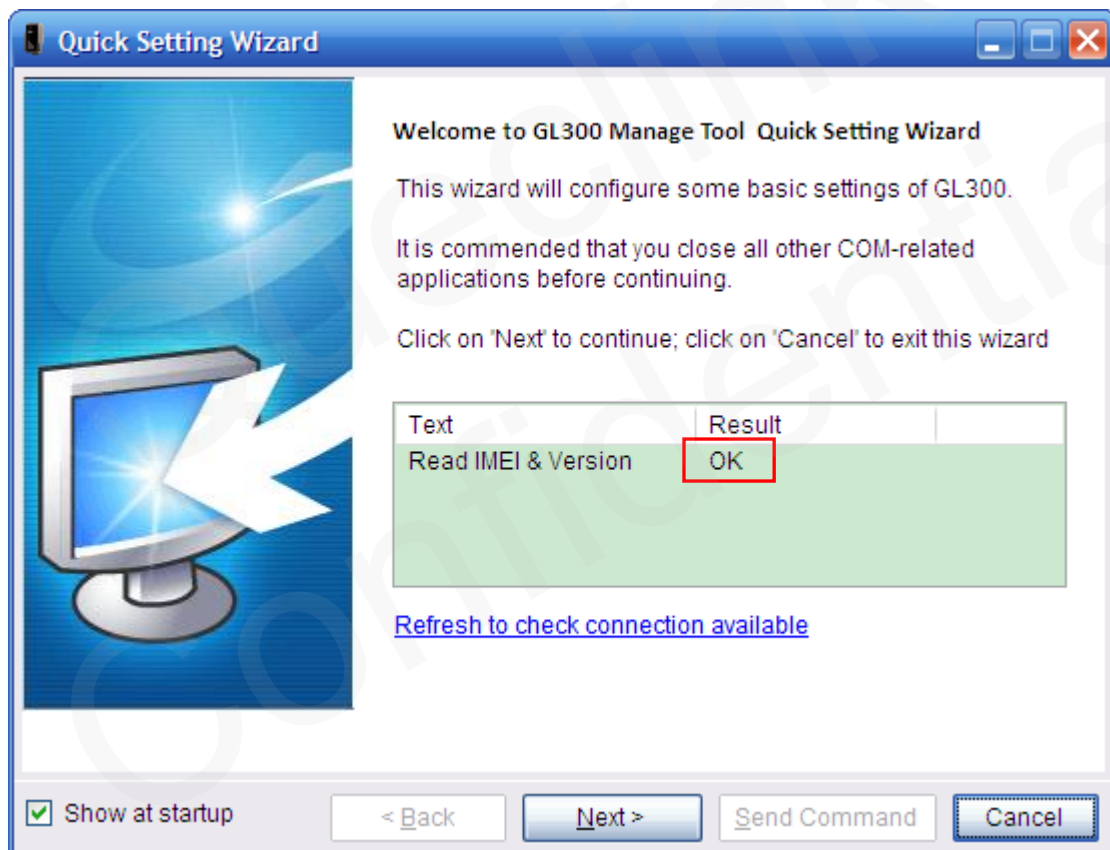
2.1.Device Configuration with Quick Setting Wizard

The manage tool is developed based on the @Track Air Interface Protocol. Please refer to “GL300 @Track Air Interface Protocol” for detail.

The quick setting wizard gives a basic setting for device. If you want use more functions of GL300, please change to professional setting mode.

2.1.1.Welcome to Quick Setting Wizard

Click “Quick Setting Wizard” in toolbar, open quick setting wizard. If the “Result” in this window is OK, click “Next”. If the “Result” is not OK, please check the COM port connection till the result is OK.

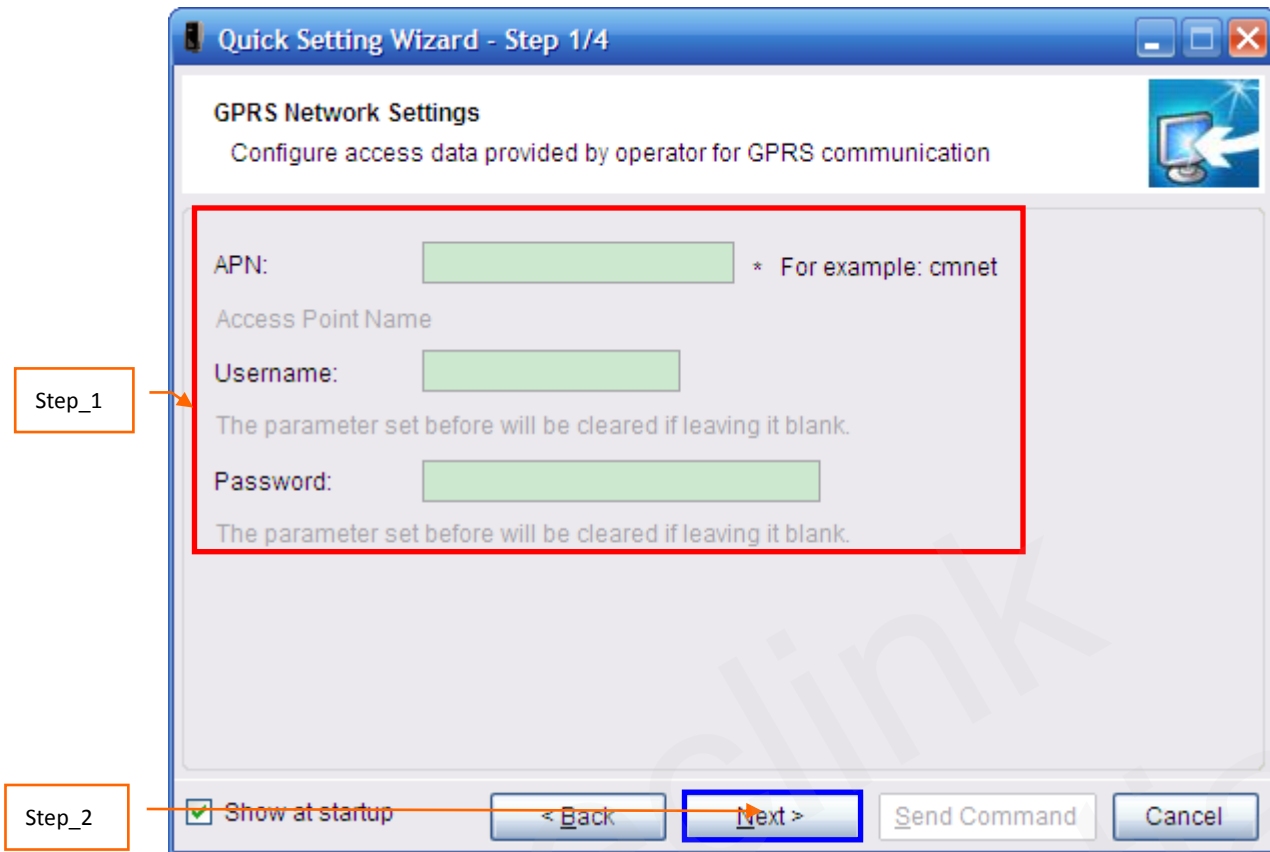


Welcome to Quick Setting Wizard

2.1.2.GPRS Network Setting

Step_1: Set APN, APN user name and password in this window. The meaning of these parameters, please refer to the “GL300 @Track Air Interface Protocol” for detail.

Step_2: Then click “Next”.

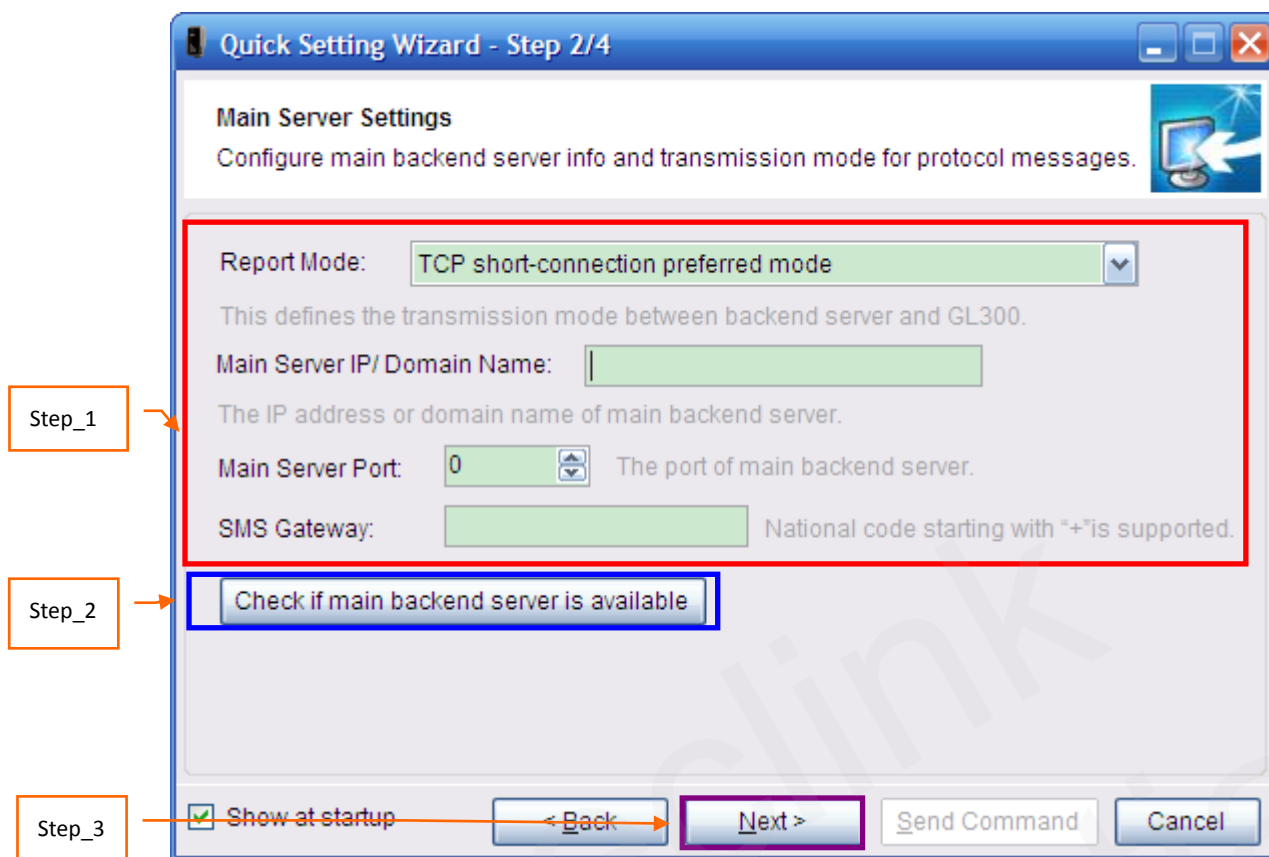


2.1.3. Main Server Setting

Step_1: Set report mode, main server, main server port, and SMS gateway in this window. The meaning of these parameters, please refer to the "GL300 @Track Air Interface Protocol" for detail.

Step_2: Click "Check if main backend server is available" to check if main server IP and port is valid in network. If the result is ERROR, please check the server connection. You can not get report from server if the server connection has problem.

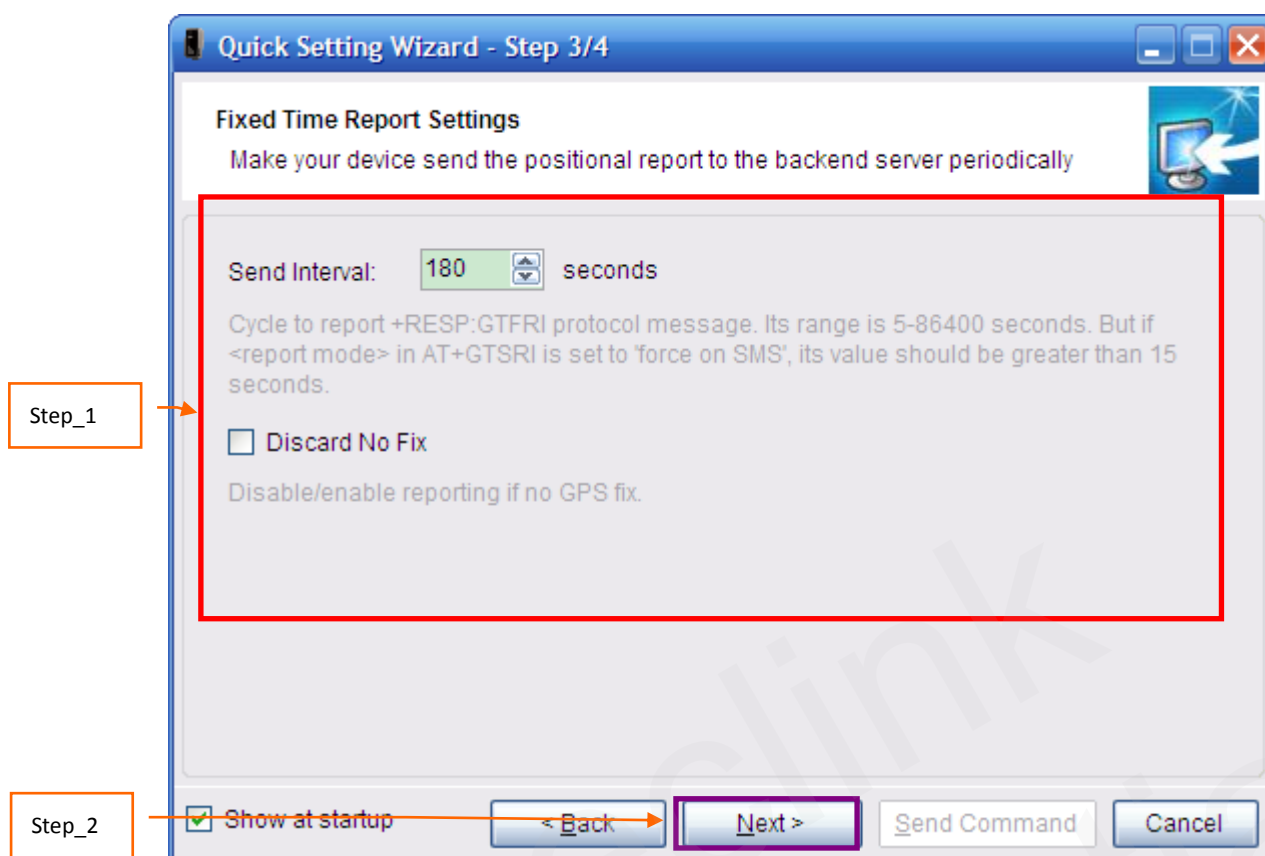
Step_3: Click "Next".



2.1.4.Fixed Time Report Setting

Step_1: Set check interval, send interval, discard no fix in this window. The meaning of these parameters, please refer to the "GL300 @Track Air Interface Protocol" for detail.

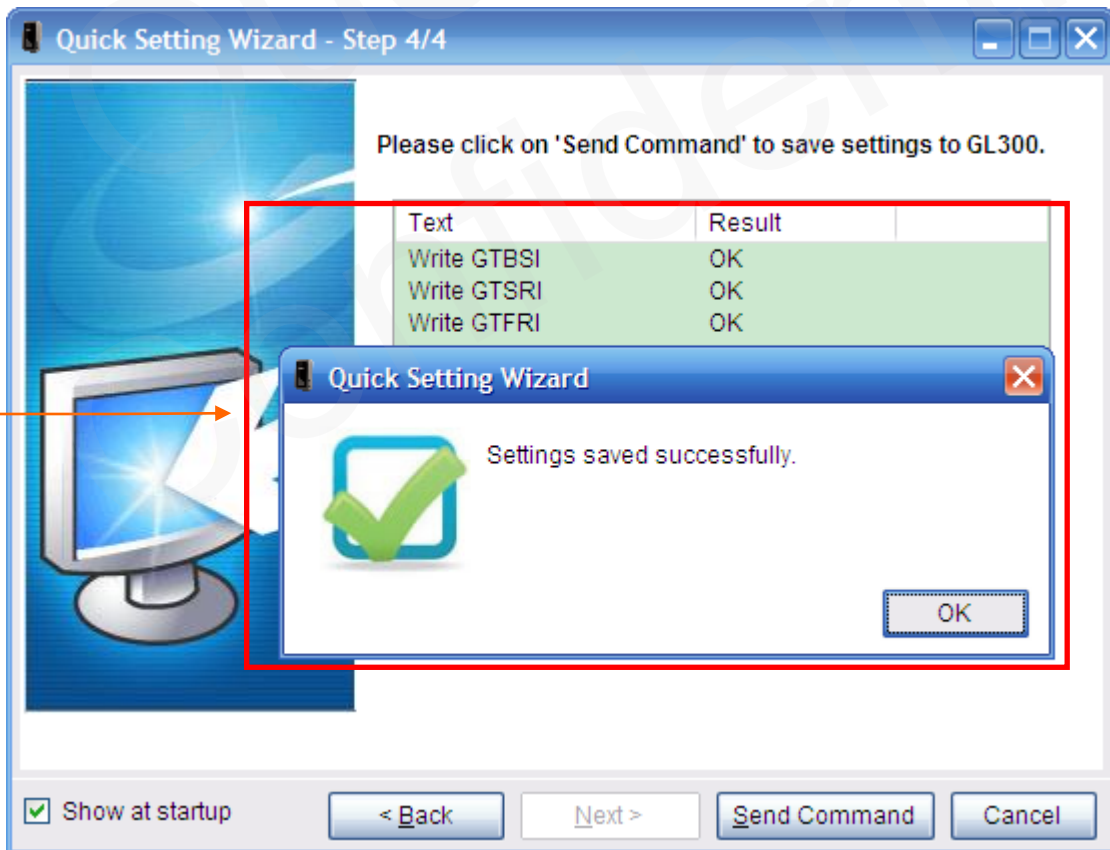
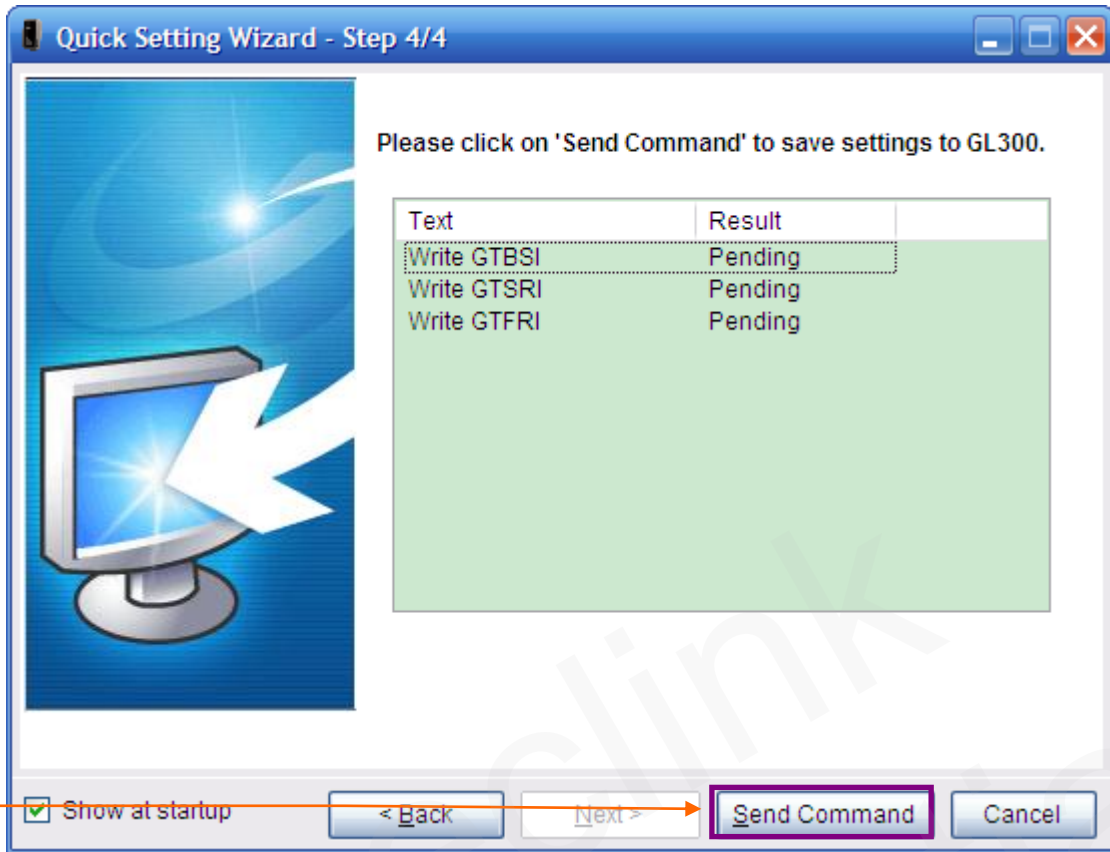
Step_2: Click "Next".



2.1.5. Send Command to Device

Step_1: Click "Send Command". Command *GTBSI*, *GTSRI*, and *GTFRI* will send to device.

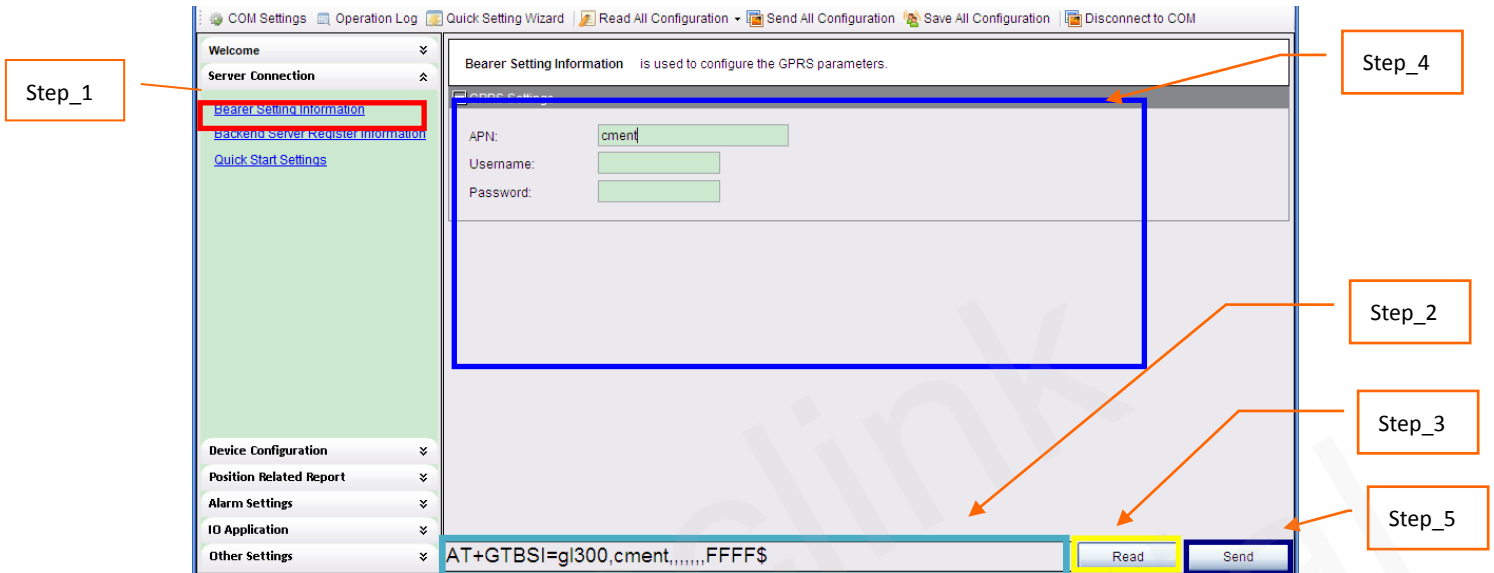
Step_2: If the settings download successfully, the result returns OK. Click "OK", the result windows closed. Quick setting is completed.



2.2. Device Configuration in Professional Setting Mode

The manage tool is developed based on the @Track Air Interface Protocol. Please refer to “GL300 @Track Air Interface Protocol” for detail.

Following is a general procedure to configure GL300 with manage tool.



Step_1: Select “*Bearer Setting Information*”, after that the parameters of GTBSI show in Command Operation Space.

Step_2: The command message which shall be sent to GL300 will be generated based on input and displayed here. Please note this command message can also be sent to GL300 through SMS or GPRS.

Step_3: It is recommended to read the parameters from GL300 and edit based on them.

Step_4: Set APN parameters. Please refer to “GL300 @Track Air Interface Protocol” for the meaning of each parameter.

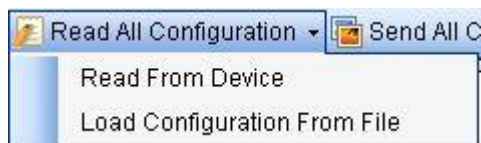
Step_5: Click the “*Send*” button; download the parameters of GTBSI to GL300.

Note:

1. The parameters of GTSRI and GTBSI will be changed when change the parameters of GTQSS.

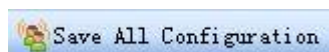
2.3.Read/Save All Configuration

Step_1: It is recommended to read all configurations from device before save the configuration. Select “Read All Configuration” → “Read From Device”.

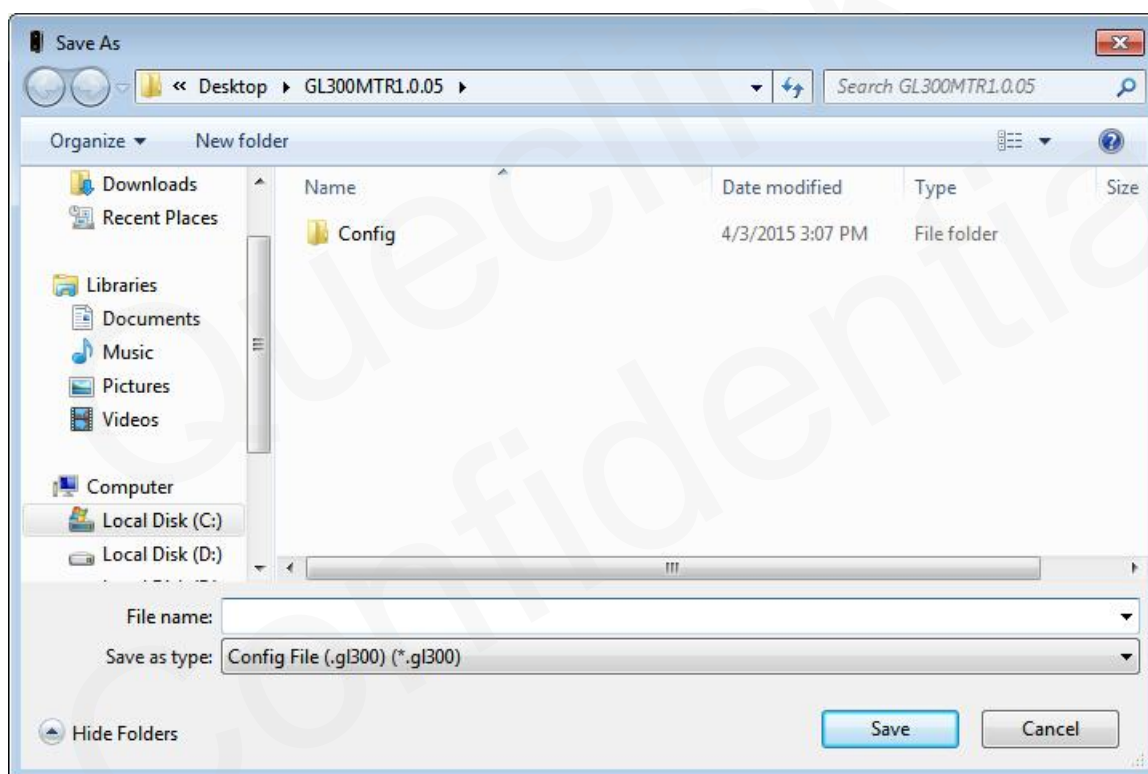


NOTE: Command GTDAT will not be read when “Read From Device”.

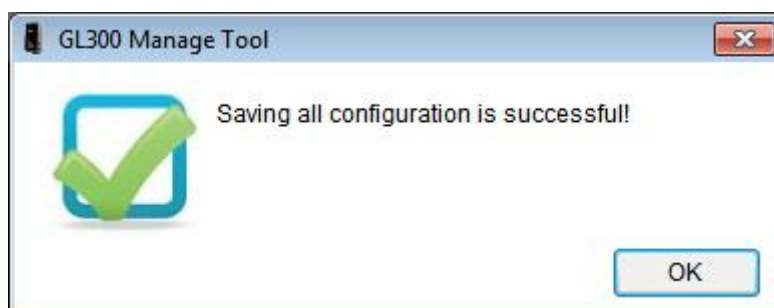
Step_2: After read successfully, click “Save All Configuration” in toolbar.



Step_3: Select a folder, and key in the name of configuration file, then click “Save” button.



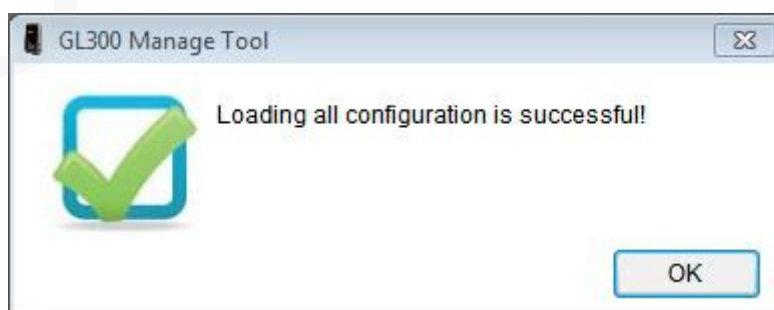
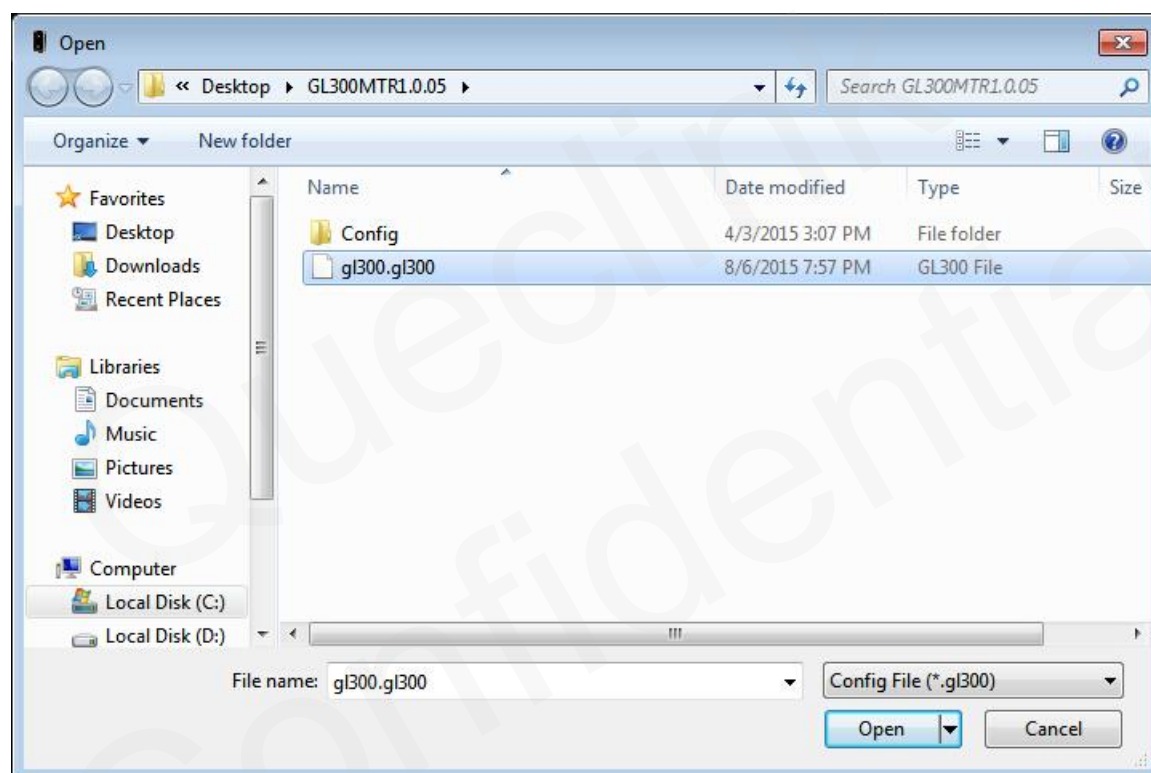
Step_4: Save successfully.



Note: Manage Tool will also generate an .ini file with AT command which MT have saved except AT+GTRTO. The name of the .ini file is composed of configuration name and “_at”. For example: Click “Save All Configuration” and key in the name of configuration file with “gv300”, it will generate “gv300.cfg” and “gv300_at.ini”. It is recommended to save all configurations before sending AT+GTCFG command or sending all commands. Because GTCFG command can change password which makes situation complicated.

2.4.Load/Send All Configuration

Step_1: Before send all configurations, please load the configuration file or set all parameters in commands. To load configuration file, please select “Read All Configuration” → “Load Configurations From File”. And then select the configuration file you needed.



Step_2: You can set the parameters in commands base on the configuration file, and then click “Send All Configuration” in toolbar.



NOTE: Command GTQSS, GTDAT, GTRTO will not be sent when *“Send All Configuration”*.

Step_3: Manage Tool will send all commands to device.