

CCTR-800+ Portable GPS Tracker User Manual --V2 20170817

Welcome to use this portable GPS tracker. This product is with GPS module and GSM module, that has many new and unique functions, such as extra big battery (6000mAH), water-Proof, powerful magnetic, LBS locate without GPS signal, check current location by iOS iPhone & Android App / Web / SMS / WeChat etc. Its standby time can reach over 1 month(about 50 days, work mode 1, report mode 0). User can control different working mode for different using, it can work without platform, just send SMS to check current location, also it can upload location to sever by user setting time interval, and more sending sms can make the tracker to go to sleep and weak up & locate one time every day, This GPS tracker suit for personal tracking ,vehicle tracking or outdoor workers tracking.

This tracker also have LBS locating function (mobile phone base station CELL ID), if no GPS signal in some place, such as underground park, indoor room, or around high building with bad GPS signal, the tracker will locate with LBS (normally the LBS CELL ID locating precision is about 50-500m in the city, and the GPS locating precision is about 10m).

Using the unique user name and password (Default user name is the last 7 digital of the tracker ID, password is same with user name), user can check the history track max to 6-12 months, the real time location, and set the over speed alarm, the geo-fence alarm and so on. The website is www.999gps.net. It suit for personal user or fleet user, and it can locate object by visiting website, wap visiting by phone, Android App or iOS iPhone App on mobile phone, WeChat on mobile phone (Android,iPhone,Symbian,Windows phone,Blackberry), sending sms to get location Google map link etc.

Scan the following QR code or click the following link can download or read online the manual in Word or Pdf format.

Word Version: <http://www.igps.info/en/cctr-800+-gpstracker-en-v2.doc>

Pdf Version: <http://www.igps.info/en/cctr-800+-gpstracker-en-v2.pdf>



[QR-Manual Download \(Word\)](http://www.igps.info/en/cctr-800+-gpstracker-en-v2.doc)



[QR-Manual Download \(Pdf\)](http://www.igps.info/en/cctr-800+-gpstracker-en-v2.pdf)

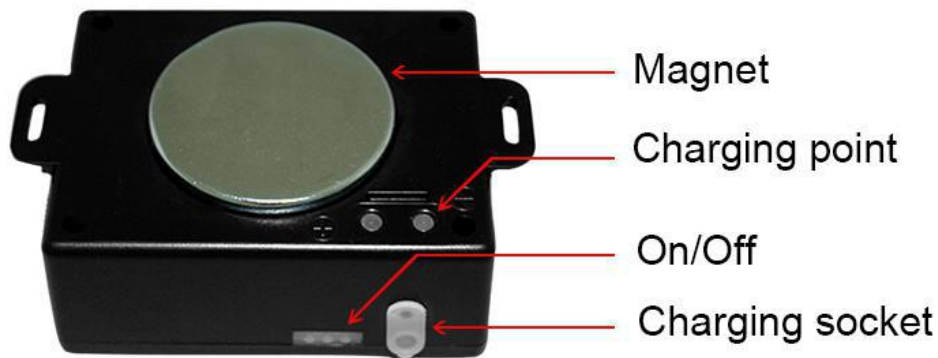


[iPhone App Download](#)

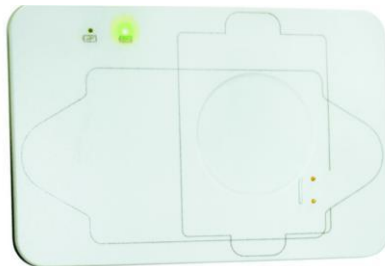


[Android App Download](#)

Product Picture:



Car Charger & Charging Wire



Charging Board



External Power Adapter

Function Specification:

- Portable Design, No installation, Easy using;
- Big Li-battery(6000mAH) standby time up to 50 days;
- SMS/Calling/App/Web/Wechat Locate;
- Can be worked without platform;
- 5 different Geo-fence in or out alarm can be set;
- Built in shock sensor for shock alarm;
- User change work & report mode by sms
- GPS + LBS can be used indoor locate;
- Universal 4 Band GSM module;
- Auto configure APN;
- Low Battery Alarm;
- Auto sleep & weak up & locate time can be set
- Suit for personal or vehicle tracking.
- Multi-charging method.

LED Flash Indicator:

- Green Power LED Flash once : working well
- Green Power LED Flash twice : GSM working well and GPS signal weak
- Green Power LED Flash three times : GSM and GPS working well but battery is low
- Green Power LED Flash four times : GSM working well, battery low & no GPS signal
- Green Power LED ON continuously : GSM Searching network

- Green Power LED OFF continuously : Power off
- Red GSM LED Flash once : Upload location to server OK
- Red GSM LED Flash twice : Upload location to server Fail

Before Using:

1. At first to buy a GSM phone SIM card which have SMS service and incoming caller ID service & GPRS data service, in which the SIM card phone number is the very tracker number and all the operation for the tracker is to this number, such as locating immediately, add & delete preset number, change password, enable over speed alarm, enable move alarm etc.

Note: this tracker use 2G GSM network, some 3G & 4G SIM card have 2G GSM network, these kind of 3G & 4G SIM card can be used in this tracker, some SIM card need send SMS to active the GPRS data service. Every month need about 10M-30M GPRS data according the different working mode, order an data package can save money.

2. Power ON / OFF

- ◆ When power is OFF, press the “ON/OFF” button till the RED LED is ON, then release the button, the tracker is powered ON, when the LED flash means the tracker is working well.
- ◆ When the power is ON, press the “ON/OFF” button till the Green LED Flash fast, and then release the button, and press the ON/OFF 3 times, the tracker will turn off LED & tracker.
- ◆ When power is OFF, recharge the tracker, the tracker will power on automatically.

3. Install SIM card: Pulling out the long narrow rubber stopple beside the tracker, you can see the SIM card socket, beside which, press the yellow switch button with a tool and then the holder will come out. Pull it out and put the SIM card in the holder and then push the holder into the tracker (Pay attention to that the SIM card metal contact pin can not face down to the holder), and push the long narrow rubber stopple into the tracker to cover the SIM card socket.

Note: Before install or uninstall the SIM card, please power off the tracker.



4. Recharge the tracker

- ◆ We recommend using OEM charger to recharge the tracker. this tracker use the 5V DC voltage to recharge, so too high voltage or AC voltage may damage the tracker or even cause accidents.
- ◆ Use the car adapter or home charger or PC USB to recharge the tracker: insert the USB wire into the charge board and car adapter or home charger or PC USB, and put the tracker on the charging board, If the LED on the adapter is RED, it means it is recharging, if the LED on the adapter is GREEN, it means the recharging is finished. This will take about 8-10 hours.



- ◆ Also use the USB charging wire insert to the tracker charging socket and connect the wire to any USB can charge the tracker. This maybe take over 10 hours according to the different charging current.



- ◆ Also this tracker can connect to the car battery all the time by using the external power adapter (9-30V input 5V output), just insert the external power adapter output wire to the tracker charging socket and connect the external power adapter input to the car battery (9-30V) is OK, after the battery is full ,the tracker will stop charging and use the external power adapter for working, the built in battery is only for backup.



5. Battery Low Alarm

When the battery voltage in the tracker is too low, the tracker GREEN LED will flash 3 or 4 times, and send battery low alarm information to authorized number, and later if the battery power is too low, it will power off automatically.

6. Back to Factory Setting (Default Setting)

Sending SMS "FACTORY*123456" to the tracker SIM card number, the tracker, the tracker will delete all the user setting (authorized number / Alarm setting / Password / APN / Working mode etc), reset to factory default setting, and then re-power on.

7. Antenna

- ◆ The Antenna of GSM and GPS are built in the tracker.
- ◆ Please leave the tracker away from big metal, this will reduce the GSM and GPS signal.

8. Using Condition

The working temperature is -20 °C to 60 °C, over this range the specification of the tracker maybe can not reach the standard level, the storage temperature can reach to -40 °C to 80 °C.

Simply Using

1. First to buy a 2G GSM phone SIM card and enable GPRS service, order a data package (Normally will use about 10M-30M GPRS data every month), install in the tracker, please refer the above **Before Using 1**.
2. Press any ON/OFF button till the tracker power on, first time using please put the tracker outdoor for easy get GPS & GSM signal.
3. Check the LED flashing to confirm the tracker work well (Refer the above **LED Flash Indicator**).
4. Send SMS "LOCATE*123456" or "URL*123456" to the tracker, a few minutes later, the tracker will reply the location with text description or Google map link by SMS. Please refer the following **Locate Operation & Setting 3 & 4**.
5. This tracker default working mode is 1, default report mode is 1, it will upload location to server when tracker moving (Please refer **Locate Operation & Setting 9&10**), this suit for user need check history tracking

on web or app, if the tracker keep moving, the battery time ca reach 3 days, if the tracker move 1 hour every day, the battery time ca reach 20 days. Change the upload time interval to longer can save battery time (please refer the following **Locate Operation & Setting 11**, default time interval is 30 seconds), if the tracker will be indoor very often, setting report mode as 3 or 4 will save more battery (please refer **Locate Operation & Setting 10**).

6. Also this tracker can be used as personal tracker, set working mode as 1 & report mode as 0 or 2 or 4, If the report mode is 0, then only making a call or sending sms can trigger the tracker report location by sms. If the report mode is 2 (Outdoor GPS) or 4 (Indoor LBS), it will upload location to server with setting time interval (please refer **Locate Operation & Setting 11**, for personal used we recommended set time interval as 5 or 10 minutes), then the current location & history tracking can be checked.

7. When used as personal tracker, 5 different geo-fence in or out alarm can be set, the alarm information will send to user by SMS (Please refer **Senior Operation & Setting 10**).

8. On the platform geo-fence and over speed alarm also can be set, but this kind of alarm information only can be checked on the platform, can not send to mobile phone by sms.

9. Set different working mode & report mode can suit for different using condition, if the tracker is used for tracking express goods, working mode can be set to 3 or 4, report mode set to 3. If the tracker is used for tracking old people or kids, working mode can be set to 1, report mode set to 1 or 3. Working mode 2 (shock control ON/OFF can save more battery power), the other condition, please set working mode & report mode by different using. The working mode & report mode changing please refer **Locate Operation & Setting 9&10**.

10. Visit & login the tracking platform www.999gps.net, display current location, playback history tracking etc can be operated, platform user name and password is the last 7 digital numbers of the tracker's ID (the ID is print on the battery, for example ID is : 800201512345678, and then the user name is : 2345678, password is :2345678, user can change the password).

11. iPhone Android App,Wap,WeChat also use the same user name and password with website login, downloading & installation please refer the platform operation guide.

12. This tracker can auto download & configure APN & GPRS user name & password, if the auto configure is not right, the tracker can not upload location to server, then you need send SMS to tracker to change the APN & GPRS manually, and send "CHECK*123456" to tracker can check the tracker setting, call the tracker SIM card supplier to confirm the APN & GPRS is right, please refer **Senior Operation & Setting 7** to set APN & GPRS username and password.

In the following content, all the SMS content is mark by "", and this "" is not include in the SMS content, it is only to used to mark the SMS content.

Locate Operation & Setting

1. Add authorized phone number

Send SMS“ADDPHONE*123456*A*phonenumber” or “401*123456*A*phonenumber” to tracker is OK, “ADDPHONE” and “401” are fixed command; “123456” is password; “A” is authorized number location, every tracker have 3 authorized phone number locations, A and B, and C, so you can set 3 phone numbers, phonenumber means the mobile phone number you want to set, if the add operation is success, the tracker will send back the information ”Add Preset Phone OK”, if the password is not right, the operation is fault, the tracker will send back information “Wrong Password”.

2. Making a call trigger reply Location Description by Text (Platform is not necessary):

Call the tracker SIM card number, after ring 3 times, the tracker will hang up the call automatically and locate immediately, a few seconds later, the tracker will send back SMS with current location text description, If the tracker has set the authorized phone number, only authorized number calling the tracker can trigger the tracker locate and reply SMS, if the other phone number call to the tracker, the tracker will hang up the calling immediately without ring & will not reply SMS.

The SMS information sample is as follow:



If the tracker can not get the location text description, the tracker will reply the location with Google map link SMS to user, **please refer the following 4**. And If no GPS signal in that place the tracker will locate by LBS (Cell ID GSM network base station), and reply the LBS location with Google map link. **please refer the following 5**.

3. Sending SMS trigger reply Location Text Description SMS(Platform is not necessary):

Send SMS “LOCATE*123456” or “123*123456” to the tracker also can trigger the tracker locate & reply SMS with current location text description, “LOCATE” and “123” is a command, “123456” is password; if the password is not right, the operation is fault, the tracker will send back information “Wrong Password. The SMS examples is same as above.

If the tracker has set the authorized phone number, then send SMS “LOCATE#” or “123#” also can trigger the tracker locate & reply SMS with current location text description, the password is not necessary any more.

4. Sending SMS trigger reply Google map link SMS(Platform is not necessary):

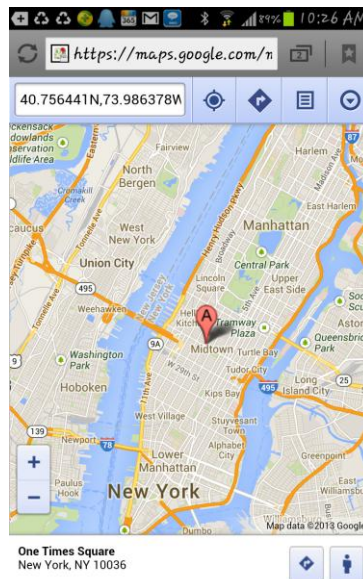
Send SMS "URL*123456" or "456*123456" to the tracker also can trigger the tracker locate & reply SMS with current location with Google map link, "URL" and "456" is a command, "123456" is password; if the password is not right, the operation is fault, the tracker will send back information "Wrong Password".

If the tracker has set the authorized phone number, then send SMS "URL#" or "456#" also can trigger the tracker locate & reply SMS with current location text description, the password is not necessary any more.

The SMS examples is same as follow:

<http://maps.google.com/maps?q=N40.756441,W73.986378>

Battery:91%



5. LBS Located (GSM network Cell ID Locate):

When the tracker is triggered to locate, if the tracker is in the place where there is no GPS signal, such as underground park, indoor room, the tracker will reply SMS with CELL ID location to user, and the precision is about 50-500m, according to the around mobile phone base station density. The location SMS is like below, click the link the map is same with the above 2.

No GPS signal, just Cell ID Location

<http://maps.google.com/maps?q=N40.756441,W73.986378>

Battery:91%

Note: The LBS location precision is not very high, in the city maybe 30-50 meters, in country side maybe over 300 meters according the GSM base station density. So this location only can be used as a reference. If the LBS can not locate either, the tracker will reply "Can not Locate now, Please Try Later !".

6. Auto SMS Cycle Tracking(No Platform, Suit for Moving Equipment):

Send SMS "LOCATE*123456*MMM" or "123*123456*MMM" or "URL*123456*MMM" or "456*123456*MMM" to the tracker, "LOCATE" and "123" and "URL" and "456" are command, "123456" is password, "MMM" is the locating time interval, unit is minutes. After the operation success, the tracker will reply "SMS Cycle Tracking, Interval is MMM minutes", and then the tracker will locate every MMM minutes, and

send location to user by SMS ("123" and "LOCATE" command reply location text description, "456" and "URL" command reply location Google map link), if the password is not right, the operation is fault, the tracker will send back information "Wrong Password".

This command will not stop automatically until user send SMS "000*123456" or "000#" (use authorized phone) to stop the command, this command will use the battery power & SMS charge very fast, please use it carefully.

The working mode 4 is seminar with this command, but under the working mode 4, the system is sleep when the tracker is not locating, this will make the battery working time very long.

7. Auto SMS Real Time Tracking 2 Hours(No Platform, Suit for Emergency Tracking):

Send SMS "TRACKING*123456" or "123456*123456" to the tracker, "TRACKING" and "123456" are command, "123456" is password. After the operation success, the tracker will reply "SMS Real Time Tracking 2 Hours", and then the tracker will locate every 2 minutes, and send location Google map link to user by SMS, if the password is not right, the operation is fault, the tracker will send back information "Wrong Password".

This command will stop automatically 2 hours later, user also can send SMS "000*123456" or "000#" (use authorized phone) to stop the command, this command will use the battery power & SMS charge very fast, please use it carefully.

8. Arm (Shock Alarm) by sending SMS (No Platform Necessary)

Send SMS "ALARMON*123456" or "789*123456" to tracker, "ALARMON" and "789" are command, "123456" is password, the tracker will send back the information "Set Shock Alarm ON" to indicate the operation is success and go to arm state, if the password is not right, the operation is fault, the tracker will send back information "Wrong Password".

After go to shock alarm state, the system will check shock sensor, if the shock sensor is trigger (**only continuously shock can trigger the shock alarm to avoid trigger by mistake**), the tracker will send alarm and location information by SMS to the authorized phone number, also the tracker will call the authorized number A first, if no answered then B and C, if 3 authorized all no answered, then stop calling, If the tracker is triggered continually, every authorized phone will receive max 3 alarm SMS per hour.

If the authorized number have been set, use the authorized phone number to send SMS "ARM#" to the tracker also can trigger the tracker to enter arm state.

The shock alarm SMS is as follow:

Shock Alarm

<https://maps.google.com/maps?q=22.67680N,114.15188E>

Battery:88%

Send SMS "ALARMOFF*123456" or "000*123456" to the tracker, "ALARMOFF" and "000" are command,

“123456” is password, the tracker will send back the information “Set Shock Alarm OFF” to indicate the operation is success and disable the shock alarm, After disable the shock alarm, the system will not check shock sensor again.

If the authorized number have been set, use the authorized phone number to send SMS “ALARMON#” or “789#” or “ALARMOFF#” or “000#” to the tracker also can trigger the tracker to enable or disable shock alarm, the password is not necessary any more.

9. Set System Working Mode

Send SMS “MODE*123456*X” or “301*123456*X” to the tracker, “MODE” and “301” are command, “123456” is password, “X” is the working mode, it is 1 or 2, if the “X” is 3 or 4, the SMS command should be “MODE*123456*X*Y” or “301*123456*X*Y” , “Y” is the sleep time from 01-99, unit is hour. after receive the command, the tracker will reply SMS “Working mode set to X (1 Working,2 Shock On/Off, 3 Cycle On/Off GPRS, 4 Cycle On/Off SMS)” . The working modes are described below:.

Mode 1 (Factory Default Mode) ----- Continuously Working (GSM keep working or standby)

This mode is the default working mode. under this mode, the tracker can receive SMS or calling, locate or not and report by GPRS or SMS is decided by report mode (**refer the following 10**).

Mode 2 ----- Shock Control ON/OFF

Under this mode, when the tracker begin to move, the tracker will be turned on, and when the tracker stop moving 5 minutes, the tracker will be turned off to sleep. When the tracker are turned off, the tracker can not receive any command, and can not be triggered locating by SMS or calling. Only shock sensor can trigger the tracker wake up. Also locate or not and report by GPRS or SMS is decided by report mode (**refer the following 10**).

This mode can save battery power than mode 1, if the tracker stop moving , standby time can reach 2 or 3 times than mode 1 (different according to the GSM & GPS signal working condition).

Mode 3 ----- Cycle ON/OFF & Upload Location to Server by GPRS (Need Platform)

Under this mode, the system ON / OFF is controlled by timer (interval time is Y hours). The tracker will be turned on and locate with GPS and then upload the location information to server by GPRS, and then a few minutes later, the tracker will be turned off, and the timer will begin to count, after the time is up, the tracker will be turned on and locate and then upload the location information to server by GPRS, again a few minutes later, the tracker will be turned off, and waiting the timer is up and repeat the above process. The battery power cost is very low in mode 3, normally this mode is used for checking location every setting time (For example check one time every day or every hour), not used for real time tracking.

Mode 4 ----- Cycle ON/OFF & Report Location to User by SMS (No Platform Necessary)

Under this mode, the system ON / OFF is controlled by timer (interval time is Y hours). The tracker will be turned on and locate with GPS and then send the location information with Google map link to user by SMS, and then a few minutes later, the tracker will be turned off, and the timer will begin to count, after the time is up,

the tracker will be turned on and locate and then send the location information with Google map link to user by SMS, again a few minutes later, the tracker will be turned off, and waiting the timer is up and repeat the above process. The battery power cost is also very low in mode 4, normally this mode is used for checking location every setting time (For example check one time every day or every hour), and the platform is not necessary, mobile phone can do this, this mode is not used for real time tracking.

In mode 3 & 4, if no GPS signal, the tracker will report the LBS location, and if the LBS location can not be got, the tracker will turn off and wait for another weak up.

Note: In mode 3 & 4, if user want to change the setting or operate, only can send the SMS command and wait for reply, the tracker will receive SMS and operate the command when the tracker weak up after the setting interval time. Or you can press the button A or B or C to start the tracker immediately.

10. Set Report Mode (Only Suit for System Working mode 1 & 2)

Send SMS "REPORT*123456*Z" or "302*123456*Z" to the tracker, "REPORT" and "302" are command, "123456" is password, "Z" is the report mode, it is 0,1,2,3 or4, after receive the command, the tracker will reply SMS "Report mode set to Z (0 No report, 1 Shock upload GPS, 2 Auto upload GPS, 3 Shock upload LBS, 4 Auto upload LBS)". The report modes are described below:.

Report Mode 0 ----- Don't Report Location Automatically (Only triggered by SMS or Calling)

Under this mode, the tracker only can be triggered by SMS or calling to located and reply location with SMS to user, but the tracker will not locate initiative and report location automatically.

Report Mode 1 (Factory Default Mode) ----- Shock Control Upload GPS Location to Platform

This mode is the default working mode, under this mode, when the tracker begin to move and the shock sensor will be triggered, the tracker will turn on the GPS, after located the tracker will upload the location to platform every setting interval time (**default is 30 seconds, time interval setting please refer the following 11, for personal using we recommended 300-600seconds**), if the tracker stop moving, 5 minutes later, the tracker will turned off GPS and stop uploading location to platform.

In this mode, if no GPS signal, the tracker will get LBS location and upload to platform, and if the LBS location can not be got, the setting interval time later, the tracker will begin another locating.

Report Mode 2 ----- Auto Upload GPS Location to Platform

Under this mode, the tracker will turn on the GPS every setting interval time, after located the tracker will upload the location to platform (**default is 30 seconds, time interval setting please refer the following 11, for personal using we recommended 300-600seconds**), wherever the the tracker is moving, the tracker will turn on the GPS & upload the location to platform every setting interval time.

In this mode, if no GPS signal, the tracker will get LBS location and upload to platform, and if the LBS location can not be got, the setting interval time later, the tracker will begin another locating.

Report Mode 3 ----- Shock Control Upload LBS Location to Platform

Under this mode, when the tracker begin to move and the shock sensor will be triggered, the tracker will locate by LBS, and will not turn on GPS to locate, after located the tracker will upload the LBS location to

platform every setting interval time (**default is 30 seconds, time interval setting please refer the following 11, for personal using we recommended 300-600seconds**), if the tracker stop moving, 5 minutes later, the tracker will stop uploading LBS location to platform.

In this mode, if the LBS location can not be got, the setting interval time later, the tracker will begin another locating.

Report Mode 4 ----- Auto Upload LBS Location to Platform

Under this mode, the tracker locate by LBS every setting interval time, the tracker will not turn on GPS to locate, after located the tracker will upload the LBS location to platform (**default is 30 seconds, time interval setting please refer the following 11, for personal using we recommended 300-600seconds**), wherever the the tracker is moving or not, the tracker will locate by LBS & upload the LBS location to platform every setting interval time.

In this mode, if the LBS location can not be got, the setting interval time later, the tracker will begin another locating.

11. Set Upload Interval Time

Send SMS "INTERVAL*123456*T" or "303*123456*T" to the tracker, "INTERVAL" & "303" are command, "123456" is password, "T" is the interval time from 30 to 999, unit is second. The tracker will send back information "Set Interval time T OK", if the password is not right, the operation is fault, the tracker will send back information "Wrong Password". 300 seconds is the default interval time. Longer upload interval time can save battery and GPRS data cost, the total mileage on the platform will have big error if the interval time is bigger than 300 seconds.

This command only set the interval time, not begin to upload the location to platform, the working mode & report mode please refer the above 9 & 10.

12. Set Sleep Time

Send SMS "SLEEPON*123456*T1*T2*Timezone" or "304*123456*T1*T2*Timezone" to the tracker, "SLEEPON" & "304" are command, "123456" is password, "T1" is the local time begin to sleep (24 hours), "T2" is the local time begin to weak up (24 hours), "Timezone" is the local time zone. The tracker will send back information "Set sleep time (T1-T2), Timezone: Tz". After receive the command, the tracker will begin to sleep from time T1, and weak up from time T2, if the T2 is smaller than T1, it means the weak up time is the second day, after the tracker go to sleep, it can not be triggered by SMS or calling to locate, only after weak up the tracker can receive command.

For example set sleep from 10 (night) to 8 (morning), time zone is east 9 (Tokyo), the SMS will be "SLEEPON*123456*22*8*9". set sleep from 10 (night) to 8 (morning), time zone is west 5 (NewYork), the SMS will be "SLEEPON*123456*22*8*-5".

The sleep can be disabled by SMS "SLEEPOFF*123456" or "305*123456" command, but if the tracker is in sleep status, the tracker will disable the sleep time later after weak up.

13. SOS Emergency Help (No Platform Necessary)

In the normal mode press the button ON/OFF on the tracker and don't release (Press button over 6 seconds), the GREEN LED will flash quickly, later the LED will be turned OFF, then release the button, the tracker will send SOS help information to all 3 preset phone, and then call the authorized number A first, if no answered then B and C, if 3 authorized number all no answered, then stop calling.

The SOS SMS information sample is as follow:

HELP!

<https://maps.google.com/maps?q=22.67680N,114.15188E>

Battery:91%

If no authorized number is added, the SOS information can not be sent. If the SOS information is received, please confirm the user is safety.

Senior Operation & Setting

1. Check Authorized Phone Number by SMS

Send SMS "CHECKPHONE*123456" or "400*123456" to the tracker number, "CHECKPHONE" & "400" are command; "123456" is password; the tracker will send back the information "Authorized Phone A: 13987654321; B: 13876543210; C: 13765432100", the phone number is just an example.

2. Delete Authorized Phone Number by SMS

Send SMS "DELETEPHONE*123456*A" or "402*123456*A" to the tracker number, "DELETEPHONE" & "402" are command; "123456" is password; "A" is authorized phone number location, there are 3 locations "A" and "B" and "C"; if the delete operation is success, the tracker will send back the information "Delete Authorized Phone OK".

3. Check Tracker Password

Send SMS "CHECKPASSWORD#" or "500#" to the tracker number, "CHECKPASSWORD" & "500" are command, if the operation is success, the tracker will send back the information "Password : 888888"; "888888" is an example.

The tracker password is used to protect the tracker only can be operated by owner, every SMS command need follow tracker password, the default tracker password is 123456, for higher security please change the tracker password, this password is different with the tracking platform login password.

Note: Only The authorized phone can check the password.

4. Change Tracker Password

Send SMS "CHANGEPASSWORD*123456*888888" or "501*123456*888888" to the tracker number, "CHANGEPASSWORD" & "501" are command; "123456" is old password; "888888" is new password; if the operation is success, the tracker will send the information "New Password : 888888" to every preset phone number".

Note: Only the authorized phone can change the password.

5. Set Alarm by Calling: ON/OFF

Send SMS "CALLON*123456" (Call to authorized number) or "CALLOFF*123456" (No calling) to the tracker, "CALLON" or "CALLOFF" is a command, "123456" is the tracker password, the tracker will send back the information "Alarm by calling : ON" or "Alarm by calling :OFF", If the alarm by calling is ON, then when the alarm is triggered, the tracker will call the authorized number to notice the alarm, the default setting is ON.

6. Set Alarm by SMS: ON/OFF

Send SMS "SMSON*123456" (Sending SMS to authorized number) or "SMSOFF*123456" (No SMS) to the tracker, "SMSON" or "SMSOFF" is a command, "123456" is the tracker password, the tracker will send back the information "Alarm by SMS : ON" or "Alarm by SMS :OFF", If the alarm by SMS is ON, then when the alarm is triggered, the tracker will send SMS to the authorized number to notice the alarm.the default setting is ON.

7. Set APN & GPRS User name and Password

This tracker can download & configure APN & GPRS username password automatically after power on, if the APN & GPRS user name password are not right, then you need sending SMS to tracker to change them, if the tracker can not upload location to platform (Red LED flash twice), please confirm the auto configuration of APN & GPRS user name password is right, the APN name and GPRS user name & password please call your tracker SIM card mobile phone company to confirm, the auto configuration APN & GPRS of the tracker please sending SMS "CHECK*123456" to the tracker to check. if the APN & GPRS are not right, please set by the following description.

Send SMS "APN*123456*apnname" to the tracker, in which, "APN" is the fixed command, "123456" is the password and "apnname" is the APN name of a mobile phone company. Having successfully been made, there will be a SMS "APN: apnname".

Send SMS "USERNAME*123456*username*password" to the tracker, "USERNAME" is a command, "123456" is the password of the tracker; "username" is the mobile company GPRS user name, "password" is the mobile company GPRS password, if the operation is success, the tracker will send back the information "Username:username, Password:password", if the password is not right, the operation is fault, the tracker will send back information "Wrong Password".

8. Tracker SIM Card Money or Data Balance Checking

Most SIM card can send a SMS or call a specified USSD command number to get a SMS with SIM card money or data balance, for example PCCW mobile phone SIM card, call ##121#, Union mobile phone send SMS CXYE to 10010, the mobile phone company will send back the SMS with money & data balance. for this

kind of SIM card , after set by the following step, sending SMS to tracker can check the tacker SIM card money or data balance.

Set sending SMS or call USSD number to check balance:

Send SMS “BALANCEMODE*123456*SMS” to the tracker, it means sending SMS to check balance, in which, “BALANCEMODE” is the fixed command, “123456” is the password and “SMS” means sending SMS. Having successfully been made, there will be a SMS “Balance Mode: SMS”.

Send SMS “BALANCEMODE*123456*CALL” to the tracker, it means calling USSD command number to check balance, in which, “BALANCEMODE” is the fixed command, “123456” is the password and “CALL” means calling USSD number. Having successfully been made, there will be a SMS “Balance Mode: CALL”.

Set sending SMS number or call USSD number:

Send SMS “BALANCEPHONE*123456*NUMBER” to the tracker, in which, “BALANCEPHONE” is the fixed command, “123456” is the password, “NUMBER” is phone number or USSD command number, for example : PCCW is calling ##121# to trigger replying SMS with balance, then the NUMBER is ##121#, Union mobile phone is sending CXYE to 10010 to trigger replying SMS with balance, then the NUMBER is 10010. Having successfully been made, there will be a SMS “Balance Phone: ##121#” or “Balance Phone: 10010” .

Set sending SMS content:

If the balance checking is sending SMS, then you need set the sending SMS content, Send SMS “BALANCESMS*123456*sms” to the tracker, in which, “BALANCESMS” is the fixed command, “123456” is the password, “sms” is the sending SMS content to check balance, if the balance checking is calling USSD number, then it is not necessary to set this. for example: Union mobile phone is sending CXYE to 10010 to trigger replying SMS with balance, then the sms is CXYE. Having successfully been made, there will be a SMS “Balance SMS: CXYE” .

Notice: After finish the above setting, it is not necessary to set again unless the tracker SIM card company changed or the tracker setting is changed to factory, later every time just sending following SMS can trigger the tracker to check balance.

Trigger to Check Balance:

After finish the above setting, send SMS “BALANCE*123456” to the tracker, in which, “BALANCE” is the fixed command, “123456” is the password, the tracker will check the balance and reply SMS with balance to sender, every mobile phone company reply SMS is different.

If the authorized number have been set, use the authorized phone number to send SMS “BALANCE#” to the tracker also can trigger the tracker to check balance.

9. Enable And Disable Overspeed Alarm (No Platform Necessary)

Send SMS "OVERSPEEDALARMON*123456*SSS" or "111*123456*SSS" to the tracker number, "OVERSPEEDALARMON" or "111" are command, "123456" is password, "SSS" is the setting alarm speed, unit is km/hour. The tracker will send back the information "Set Overspeed Alarm On :SSS km/h" .

After enable overspeed alarm, the system will check the speed every 5 minutes. If the speed is higher than the setting speed, the tracker will send alarm and location information by SMS to the authorized phone number A (only send to A), The authorized phone will receive max 3 alarm SMS per hour, one hour later it will be active again.

The overspeed alarm SMS is as follow:

Overspeed Alarm

Current Speed:110km/h,Setting:100km/h

Battery:88%

Send SMS "OVERSPEEDALARMOFF*123456*" or "100*123456*" to the tracker number, "OVERSPEEDALARMOFF" or "100" are command, "123456" is tracker password, the tracker will send back the information "Set Overspeed Alarm Off" .

If the authorized number have been set, use the authorized phone number to send SMS "OVERSPEEDALARMOFF#" or "100#" to the tracker also can disable the over speed alarm setting.

Note: In the default, the over speed alarm setting is OFF.

10. In & Out Geo-fence Alarm (5 Geo-Fences Can be Set, No Platform Necessary)

Total 5 Geo-fences can be set, every geo-fence can be set break in alarm or break out alarm or break in & out alarm, every geo-fence can be enable or disable, the geo-fence is a circle and the radius is set by SMS, and the center of the circle is set by tracker current location (If the tracker can not located by GPS, then the setting geo-fence command fail) or set by SMS.

Note: After enable the geo-fence alarm, the tracker will locate every 5 minutes to check the tracker is in or out the geo-fence, this will make the battery working time reduce to 1-2 days (according to the different place & GPS & GSM signal). Default all the geo-fence alarm is OFF.

Out Geo-fence Alarm

Send SMS "OUT*123456*A*GGG" or "220*123456*A*GGG" to the tracker number, "OUT" or "220" are command, "123456" is password, "A" is the geo-fence A, total can be set 5 geo-fence A / B / C / D / E, "GGG" is the radius of the geo-fence circle (the center of the circle is the tracker current location), unit is km, it is from 001 to 999. After receive the command, the tracker will locate immediately, after located, the tracker will set current location as the geo-fence center and GGG as the geo-fence radius (unit is km), the tracker will send back the information "Out Geofence (A) Alarm On, GGGkm", if the tracker can not locate, the tracker will reply "Can not locate, Set Out Geofence (A) fail".

After set the out geo-fence alarm, the tracker will locate every 5 minutes to check the tracker is in or out

the geo-fence circle, if the tracker has go out the geo-fence circle, the tracker will send out geo-fence alarm information to all authorized number, and only send once, if the tracker go into the geo-fence and go out the geo-fence again, the tracker will send alarm information again.

The geo-fence alarm SMS is as follow:

Out Geofence (A) Alarm

<https://maps.google.com/maps?q=22.67680N,114.15188E>

Battery:88%

Send SMS "OUT*123456*A" or "220*123456*A" to the tracker number can enable the geo-fence that has been set before, the SMS content description is same as above, the tracker will not set the geo-fence again, just enable go out the geo-fence alarm that is set before. After receive the command, the tracker will send back the information "Out Geofence (A) Alarm On,GGGkm". If the geo-fence is not set before, the tracker will reply "Geo-fence (A) was not set before".

In Geo-fence Alarm

Send SMS "IN*123456*B*GGG" or "221*123456*B*GGG" to the tracker number, "IN" or "221" are command, "123456" is password, "B" is the geo-fence B, total can be set 5 geo-fence A / B / C / D / E, "GGG" is the radius of the geo-fence circle (the center of the circle is the tracker current location), unit is km, it is from 001 to 999. After receive the command, the tracker will locate immediately, after located, the tracker will set current location as the geo-fence center and GGG as the geo-fence radius (unit is km), the tracker will send back the information "In Geofence (B) Alarm On, GGGkm", if the tracker can not locate, the tracker will reply "Can not locate, Set In Geofence (B) fail".

After set the in geo-fence alarm, the tracker will locate every 5 minutes to check the tracker is in or out the geo-fence circle, if the tracker has go into the geo-fence circle, the tracker will send in geo-fence alarm information to all authorized number, and only send once, if the tracker go out the geo-fence and go into the geo-fence again, the tracker will send alarm information again.

The geo-fence alarm SMS is as follow:

In Geofence (B) Alarm

<https://maps.google.com/maps?q=22.67680N,114.15188E>

Battery:88%

Send SMS "IN*123456*B" or "221*123456*B" to the tracker number can enable the geo-fence that has been set before, the SMS content description is same as above, the tracker will not set the geo-fence again, just enable go into the geo-fence alarm that is set before. After receive the command, the tracker will send back the information "In Geofence (B) Alarm On,GGGkm". If the geo-fence is not set before, the tracker will reply "Geo-fence (B) was not set before".

In & Out Geo-fence Alarm

Send SMS "INOUT*123456*C*GGG" or "222*123456*C*GGG" to the tracker number, "INOUT" or "222" are command, "123456" is password, "C" is the geo-fence C, total can be set 5 geo-fence A / B / C / D / E,

“GGG” is the radius of the geo-fence circle (the center of the circle is the tracker current location), unit is km, it is from 001 to 999. After receive the command, the tracker will locate immediately, after located, the tracker will set current location as the geo-fence center and GGG as the geo-fence radius (unit is km), the tracker will send back the information “In & Out Geofence (C) Alarm On, GGGkm”, if the tracker can not locate, the tracker will reply “Can not locate, Set In & Out Geofence (C) fail”.

After set the in & out geo-fence alarm, the tracker will locate every 5 minutes to check the tracker is in or out the geo-fence circle compare with the last located, if the tracker has go into the geo-fence circle from outside or go out from the geo-fence circle, the tracker will send in or out geo-fence alarm information to all authorized number, and only send once, from outside go into the geo-fence or from geo-fence circle go out side all can trigger the the tracker send break geo-fence alarm information once.

The geo-fence alarm SMS is as follow:

In or Out Geofence (C) Alarm

<https://maps.google.com/maps?q=22.67680N,114.15188E>

Battery:88%

Send SMS “INOUT*123456*C” or “222*123456*C” to the tracker number can enable the geo-fence that has been set before, the SMS content description is same as above, the tracker will not set the geo-fence again, just enable go into the geo-fence alarm that is set before. After receive the command, the tracker will send back the information “In & Out Geofence (C) Alarm On,GGGkm”. If the geo-fence is not set before, the tracker will reply “Geo-fence (C) was not set before”.

Turn Off Geo-fence Alarm

Send SMS “FENCEOFF*123456*D” or “200*123456*D” to the tracker number, “FENCEOFF” or “200” are command, “123456” is password, “D” is the geo-fence D, total can be set 5 geo-fence A / B / C / D / E. After receive the command, the tracker will stop check the Geo-fence D alarm immediately, and send back the information “Geofence (D) Alarm Off”.

Send SMS “FENCEOFF*123456” or “200*123456” to the tracker number will turn off all geo-fence alarm setting, after receive the command, the tracker will stop check all Geo-fence alarm immediately, and send back the information “All Geo-fence Alarm Off”.

If the authorized number have been set, use the authorized phone number to send SMS “FENCEOFF#” or “200#” to the tracker also can disable all the geo-fence alarm setting.

Set the Center & Radius of Geo-Fence by SMS

Send SMS “SETFENCE*123456*E*GGG*22.680307N*114.146843E” or “223*123456*E*GGG*22.680307N*114.146843E” to the tracker number, “SETFENCE” or “223” are command, “123456” is password, “E” is the geo-fence E, total can be set 5 geo-fence A / B / C / D / E, “GGG” is the radius of the geo-fence circle, unit is km, it is from 001 to 999, “22.680307N” and “114.146843E” are the center point longitude & latitude of the geo-fence circle. After receive the command, the tracker will set “22.680307N” and “114.146843E” as the

center point of the geo-fence E circle, and set GGG km as the radius of the geo-fence E circle. the tracker will send back the information "Set Geofence (E) 22.680307N,114.146843E, GGGkm".

Note: This command only set the geo-fence circle center point & radius, not enable the geo-fence alarm, the geo-fence circle center point longitude & latitude user can check on the Google earth. This command is used to set the geo-fence but the tracker are not in that place now.

Set the Geo-Fence Name by SMS

Send SMS "FENCENAME*123456*A*SCHOOL" or "224*123456*A*SCHOOL" to the tracker number, "FENCENAME" and "224" are command, "123456" is password, "A" is the geo-fence A, total can be set 5 geo-fence A / B / C / D / E, "SCHOOL" (max 10 letters) is the setting name of the geo-fence A. After receive the command, the tracker will set the name of geo-fence A as SCHOOL, later when the tracker send geo-fence alarm information, the name will be in the alarm information, so that user can easy know which geo-fence is break. For example:

Out Geofence (C)(SCHOOL) Alarm

<https://maps.google.com/maps?q=22.67680N,114.15188E>

Battery:88%

Check Geo-Fence Alarm Setting

Send SMS "FENCE*123456" or "229*123456" to the tracker number, "FENCE" and "229" are command, "123456" is password, the tracker will send back the information of every geo-fence alarm setting, for example:

Fence A (SCHOOL) ,In:ON,Out:ON; Fence B (HOME) ,In:ON,Out:ON; Fence C (Grandma) ,In:ON,Out:OFF; Fence D (Uncle) ,In:OFF,Out:ON; Fence E (RIVER) ,In:OFF,Out:OFF;

11. Check Alarm Setting

Send SMS "ALARM*123456" or "110*123456" to the tracker number, "ALARM" and "110" are command, "123456" is password, the tracker will send back the information of the alarm setting, for example:

Shock Alarm:ON,OverSpeed:OFF(100km/h),Auto Cycle SMS Tracking: OFF,Auto SMS Real Tracking: OFF,Working Mode 3&4 (Cycle On/Off Locate):OFF,Geo-Fence:ON.

If the authorized number have been set, use the authorized phone number to send SMS "ALARM#" or "110#" to the tracker also can trigger the tracker to check balance.

12. Cancel Shock Alarm / Auto Cycle SMS Tracking / Auto SMS Real Tracking / Working Mode 3&4

Send SMS "000*123456" to tracker, "000" is a command, "123456" is password, the tracker will send back information " Shock Alarm / Auto Cycle SMS Tracking / Auto SMS Real Tracking / Working Mode 3&4 Alarm Cancel", and cancel these alarm setting.

Note: RESET and FACTORY also can cancel all alarm setting, please see the following.

13. Cancel All Alarm Setting (Including 12)

Send SMS "CANCELALARM*123456" or "000000*123456"to tracker, "CANCELALARM" and "000000" is

a command, "123456" is password, the tracker will send back information " Cancel All Alarm Setting", and cancel all alarm setting (including the 4 alarm setting in 12, also cancel geo-fence alarm,over speed alarm) .

This command will cancel all alarm setting, including the 4 alarm canceled in 12, also this command will cancel Geo-fence alarm & over speed alarm.

Note: RESET and FACTORY also can cancel all alarm setting, please see the following.

14. Check tracker setting

Send SMS "CHECK*123456" to the tracker number, "CHECK" is the fixed command, "123456" is password. The tracker will send back information including software version, ID S/N number, IP address, authorized phone number, GPS and GSM signal etc, normally this command is used to test the tracker is working well or not. The following is an example :

```
800+,V 04 28 2015,CC830,800201412345678,MODE:1,REPORT:0,d3.igps.info,58.64.155.133,
8011,300,A:13987654321,B:13876543210,C:13765432101,GPS 9,GSM:-95dBm,CMNET,User>Password,
460,00,255,1,9376,3613,07,88%
```

```
800+           :Product model
V 04 28 2015   :Software version
CC830          :Protocol(CC800/CC828/CC830/CC630 etc)
800201512345678 :ID number
MODE:1         :System Working Mode
Report:0       :Report Mode
58.64.155.133,8011 :Server IP & Port
300            :Upload Time Interval
A:13987654321,B:13876543210,C:13765432101 :Authorized Number
GPS 9          :GPS signal (Satellite)
GSM:-95dBm    :GSM signal
CMNET         :Current APN
User          :GPRS User Name
Password      :GPRS Password
460,00,255,1,9376,3613,07
                :GSM Base Station Information
                "MCC,MNC,TA,NUM,LAC, CID,RXLEV ,LAC2,CID2,RXLEV2..."
88%           :Built in Battery Power
```

15. Re-power On & Reset Tracker

Send SMS "RESET*123456" to the tracker number, "RESET" is a command, "123456" is password. The tracker will send back information "Reset Tracker and cancel all alarm setting", then the tracker will power off and then power on automatically, and this command will not cancel user setting.

16. Back to Factory Default Configuration

Send SMS "FACTORY*123456" to the tracker number, "FACTORY" is the fixed command, "123456" is

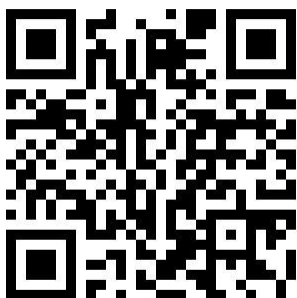
password. The tracker will send back information "Set factory setting OK", then the tracker will cancel all the alarm setting in the tracker, and also delete all the authorized phone number, delete the APN and GPRS user name and password, change the tracker password to 123456, reset the IP address, reset the system working mode and the interval time, and so on.

If the tracker password is forgotten, use the authorized the mobile phone can change the password, but if no authorized phone is added, then user can not reset the tracker to factory mode.

Platform Operation

If user enable the uploading location to platform server www.999gps.net (sending SMS to tracker to change the report mode to 1 or 2 or 3 or 4 can enable the tracker start upload location to platform server), the current location & history tracking can be checked on the platform with PC website & mobile phone App login (Login name is the last 7 digitals of the tracker ID, the ID is print on the bar code label, ID also can be check by SMS). The platform is life time free service charge, user only need pay the SIM card data charge (every month maybe cost 10-20M GPRS data), please note that the battery working time will be very short after enable the uploading location to server, and the working time is different according to the different working mode and upload time interval.

The platform operation please refer the platform operation guide, scan the following QR code or click the website link to download the platform manual, visit website www.999gps.net and click the Manual icon also can download the platform manual.



[Platform User Guide Word Version](#)



[Platform User Guide Word Version](#)

Check Tracker ID:

The tracker ID is print on the label of the tracker, if the label is missing, send SMS "ID*123456" to tracker, in which, "ID" is the fixed command and "123456" is the password. The tracker will reply SMS "ID: 800201612345678", in which, "800201612345678" is the ID and every tracker corresponds to the only number. This number is used to differ the tracking uploaded to the website from others. the last 7 digital number of the tracker ID is the user name and password of the tracker on the tracking platform www.999gps.net, for example the tracker ID is : 800201612345678, and then the user name on the platform of this tracker is : 2345678, and the platform password for this user name also is :2345678, user can change the password after login.

Set Website Server IP address

The tracker IP address has been set to default : 58.64.155.133,8011 in factory, For normally this is not necessary to change, If our server IP is changed, we will notice on the website. But if you need upload location to your own server, send SMS "IP*123456*100.101.102.103,8888" to the tracker, in which, "IP" is the fixed command, "123456" is the password and "100.101.102.103,8888" is the IP address & port of the your own server. Having successfully been set, there will be a SMS "IP: 100.101.102.103,8888".

Trouble Shooting

1. Please confirm that the SIM card PIN code has been disabled, it means if mobile phone use this SIM card, it is not necessary to input any password.
2. This tracker use 2G GSM network, and it upload tracking only through 2G GPRS, some 3G & 4G card have 2G GSM network, this kind of SIM card can be used in this tracker.
3. The tracking data on our server will keep 6-12 months, the old data will be deleted.
4. After power on the tracker, call the tracker, no response, and no ring, please confirm the SIM card has been installed properly, and the SIM card has enough charge, and the mobile phone can work well in that place.
5. If the tracker can not upload location to website, please confirm the SIM card GPRS function is activated, and the APN or GPRS username & password have been set properly (call the mobile phone to confirm the APN & GPRS username and password).
6. If the tracker can not send back information by SMS, please confirm the SIM card has ID caller display function and SMS service function, and you have set the center or slave center number (only center or slave center number can send SMS), and please read the SMS information of the tracker sending back, and check the instruction & password is right or not.
7. Can not login the platform: use SMS to check the ID of the tracker, and try it again, if not success please contact distributor.
8. After go out the under ground park, some tracking maybe lost, the GSM and GPS module will take a few minutes to receive signal and re-locate, some tracking maybe lost, this is normal.
9. Some time some location point is lost, this is normal, in the transmit process, some point maybe is lost, but this will not happen very often.

Specification:

GSM Module	SIMCOM	GPS Module	U-Blox
GSM Frequency	850/900/1800/1900Mhz (4 Band)	GPS channel	24 channels
GSM / GPS Antenna	Built in	Locate precision	10-20 Meters
GPS Cold Start Time	36 seconds	GPS Hot Start Time	1 second
Working Voltage	5V DC	Recharging Current	< 5V/200mA
Standby Current	< 10 mA	Uploading Current	<150mA / 5V
Battery	6000mAh	Working Temperature	-20 °C to +55 °C
Absolute Temperature	-35 °C to +70 °C	Storage Temperature	-40 °C to +80 °C

Packing List:

Tracker Main Unit	1 set	
Micro USB Charging Wire	1 pcs	
Charging Board	1 pcs	
User Guide Card	1 pcs	Print
USB Charging Wire	1 pcs	
External Power Adapter	1 pcs	
Tracker & Platform Manual	1 pcs	CD or Print
Car Charger	1 pcs (Optional)	9-30V Input,0.5A, 5V Output
Home AC Charger	1 pcs (Optional)	110-220V Input,0.5A, 5V Output

Warranty

This system has been tested before sold. We strongly recommend you to get this system installed by professional. There is a one-year warranty except the following condition:

1. Installed, fixed, or changed by personally or unprofessional.
2. Warranty will eliminate if the ownership of the tracker has been changed.
3. Parts damaged by man-made.
4. Battery, adapter, wires, etc.

Warning: this device is just a auxiliary product that applying the location of current object, we have not any responsibility if you have damage or lost in using this tracker.

Customer			
User Mobile Phone		Tracker SIM card	
Date	Year	month	day
Model	CCTR-800+	ID Number	
Distributor			

Notes: The explanation of this manual is belonged to our company, some small changes may not notice customer, if you have any problem please contact us, thanks !